

GCP3 (D238) polyclonal antibody

Catalog: BS9149

Host: Rabbit

Reactivity: Human, Mouse, Rat

Background:

The γ -Tubulin complex is composed of γ Tubulin and the γ -Tubulin complex associated proteins GCP2, GCP3, GCP4, GCP5 and GCP6, all of which are essential components of microtubule organizing centers. γ -Tubulin complex components are localized to both the centrosome, where they are involved in microtubule nucleation, and to the cytoplasm, where they exist as soluble complexes that can be recruited to the centrosome as needed. Although the GCP proteins are related, they have distinct roles which contribute to the proper function of the γ -Tubulin complex. GCP3 (gamma-tubulin complex component 3), also known as TUBGCP3 or SPBC98, localizes to the centrosome and is an ubiquitously expressed 907 amino acid member of the γ -Tubulin complex.

Product:

Rabbit IgG, 1mg/ml in PBS with 0.02% sodium azide, 50% glycerol, pH7.2

Molecular Weight:

~ 104 kDa

Swiss-Prot:

Q96CW5

Purification&Purity:

The antibody was affinity-purified from rabbit antiserum by affinity-chromatography using epitope-specific im-

munogen and the purity is > 95% (by SDS-PAGE).

Applications:

IHC: 1:50~1:200

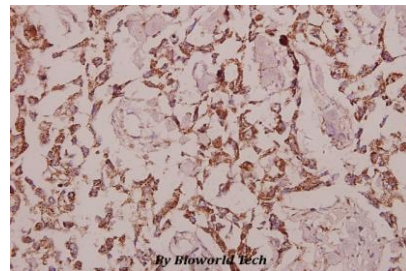
Storage&Stability:

Store at 4 °C short term. Aliquot and store at -20 °C long term. Avoid freeze-thaw cycles.

Specificity:

GCP3 (D238) polyclonal antibody detects endogenous levels of GCP3 protein.

DATA:



Immunohistochemistry (IHC) analyzes of GCP3 (D238) pAb in paraffin-embedded human breast carcinoma tissue at 1:50.

Note:

For research use only, not for use in diagnostic procedure.

Bioworld Technology, Inc.

Add: 1660 South Highway 100, Suite 500 St. Louis Park, MN 55416, USA.

Email: info@bioworld.com

Tel: 6123263284

Fax: 6122933841

Bioworld technology, co. Ltd.

Add: No 9, weidi road Qixia District Nanjing, 210046, P. R. China.

Email: info@biogot.com

Tel: 0086-025-68037686

Fax: 0086-025-68035151