

TAUT (G594) polyclonal antibody

Catalog: BS9162

Host: Rabbit

Reactivity: Human, Mouse, Rat

BackGround:

Taurine is an abundant organic osmolyte that possesses antioxidant and immunomodulatory properties and plays a role in cell volume homeostasis. Taurine is taken up into cells via the taurine transporter (TAUT). TAUT, which is sodium- and chloride-dependent, is a multi-pass membrane protein belonging to the sodium neurotransmitter symporter (SNF) family of proteins. TNF α upregulates TAUT expression, while phosphorylation on Serine 322 downregulates it. Overexpression of TAUT protects renal cells from cisplatin-induced nephrotoxicity.

Product:

1 mg/ml in Phosphate buffered saline (PBS) with 0.05% sodium azide, approx. pH 7.2.

Molecular Weight:

~ 70 kDa

Swiss-Prot:

P31641

Purification&Purity:

The antibody was affinity-purified from rabbit antiserum by affinity-chromatography using epitope-specific immunogen and the purity is > 95% (by SDS-PAGE).

Applications:

WB: 1:500~1:1000

IHC: 1:50~1:200

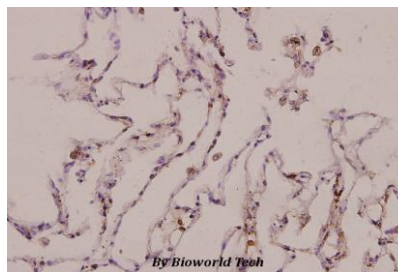
Storage&Stability:

Store at 4 °C short term. Aliquot and store at -20 °C long term. Avoid freeze-thaw cycles.

Specificity:

TAUT (G594) polyclonal antibody detects endogenous levels of TAUT protein.

DATA:



Immunohistochemistry (IHC) analyzes of TAUT (G594) pAb in paraffin-embedded human lung carcinoma tissue at 1:100.

Note:

For research use only, not for use in diagnostic procedure.

Bioworld Technology, Inc.

Add: 1660 South Highway 100, Suite 500 St. Louis Park, MN 55416, USA.

Email: info@bioworld.com

Tel: 6123263284

Fax: 6122933841

Bioworld technology, co. Ltd.

Add: No 9, weidi road Qixia District Nanjing, 210046, P. R. China.

Email: info@biogot.com

Tel: 0086-025-68037686

Fax: 0086-025-68035151