

## MATK/Lsk (V157) polyclonal antibody

Catalog: BS9181

Host: Rabbit

Reactivity: Human, Mouse, Rat

### BackGround:

For instance, a mutant of c-Src, in which Y527 is replaced by phenylalanine, is transforming and displays 5 to 10-fold elevated kinase activity compared to its normal counterpart. Csk has been identified as a Src related tyrosine kinase having both SH2 and SH3 domains and a catalytic domain but lacking sequences amino terminal to the SH3 domain as well as the carboxy-terminal regulatory sequences. Csk phosphorylates Src on Y527 and also down regulates Lyn, Fyn and Lck by tyrosine phosphorylation of carboxy-terminal regulatory sites. A Csk-like protein- tyrosine kinase of mouse origin (Ctk), also designated Ntk, and its human homolog, Lsk, have also been described.

### Product:

1 mg/ml in Phosphate buffered saline (PBS) with 0.05% sodium azide, approx. pH 7.2.

### Molecular Weight:

~ 56 kDa

### Swiss-Prot:

P42679

### Purification&Purity:

The antibody was affinity-purified from rabbit antiserum by affinity-chromatography using epitope-specific immunogen and the purity is > 95% (by SDS-PAGE).

### Applications:

WB: 1:500~1:1000

IHC: 1:50~1:200

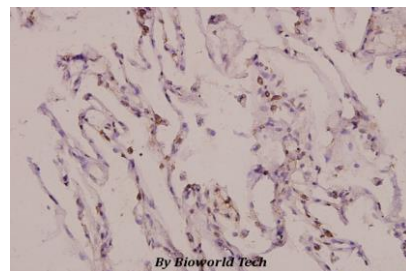
### Storage&Stability:

Store at 4 °C short term. Aliquot and store at -20 °C long term. Avoid freeze-thaw cycles.

### Specificity:

Lsk (V157) polyclonal antibody detects endogenous levels of Lsk protein.

### DATA:



Immunohistochemistry (IHC) analyzes of Lsk (V157) pAb in paraffin-embedded human lung carcinoma tissue at 1:100.

### Note:

For research use only, not for use in diagnostic procedure.

### Bioworld Technology, Inc.

Add: 1660 South Highway 100, Suite 500 St. Louis Park, MN 55416, USA.

Email: [info@bioworld.com](mailto:info@bioworld.com)

Tel: 6123263284

Fax: 6122933841

### Bioworld technology, co. Ltd.

Add: No 9, weidi road Qixia District Nanjing, 210046, P. R. China.

Email: [info@biogot.com](mailto:info@biogot.com)

Tel: 0086-025-68037686

Fax: 0086-025-68035151