

Cleaved-Cathepsin O (L108) polyclonal antibody

Catalog: BS9350

Host: Rabbit

Reactivity: Human,Rat

BackGround:

The cathepsin family of proteolytic enzymes contains several diverse classes of proteases. The cysteine protease class comprises cathepsins B, L, H, K, S, and O. The aspartyl protease class is composed of cathepsins D and E. Cathepsin G is in the serine protease class. Most cathepsins are lysosomal and each is involved in cellular metabolism, participating in various events such as peptide biosynthesis and protein degradation. Cathepsin O maintains the structural features characteristic of other cysteine proteinases including the active site cysteine residue that is involved in covalent intermediate formation during peptide hydrolysis. Cathepsin O is an endoproteinase that may be involved in extracellular matrix degradation. Cathepsin O is abundantly expressed in the ovary, kidney and placenta with lower levels found in thymus and skeletal muscle.

Product:

Rabbit IgG, 1mg/ml in PBS with 0.02% sodium azide, 50% glycerol, pH7.2

Molecular Weight:

~ 23 kDa

Swiss-Prot:

P43234

Purification&Purity:

The antibody was affinity-purified from rabbit antiserum by affinity-chromatography using epitope-specific immunogen and the purity is > 95% (by SDS-PAGE).

Applications:

WB: 1:500~1:1000

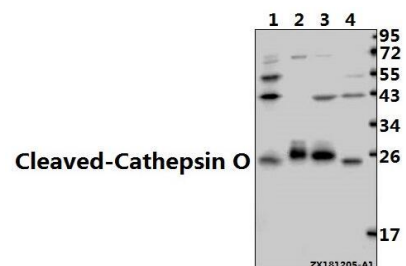
Storage&Stability:

Store at 4 °C short term. Aliquot and store at -20 °C long term. Avoid freeze-thaw cycles.

Specificity:

Cleaved-Cathepsin O (L108) polyclonal antibody detects endogenous levels of Cleaved-Cathepsin O protein.

DATA:



Western blot (WB) analysis of Cleaved-Cathepsin O (L108) polyclonal antibody at 1:500 dilution

Lane1:Beas-2B whole cell lysate(40ug)

Lane2:HeLa whole cell lysate(10ug)

Lane3:The Kindey tissue lysate of Rat(40ug)

Lane4:HEK293T whole cell lysate(40ug)

Note:

For research use only, not for use in diagnostic procedure.

Bioworld Technology, Inc.

Add: 1660 South Highway 100, Suite 500 St. Louis Park, MN 55416, USA.

Email: info@bioworld.com

Tel: 6123263284

Fax: 6122933841

Bioworld technology, co. Ltd.

Add: No 9, weidi road Qixia District Nanjing, 210046, P. R. China.

Email: info@biogot.com

Tel: 0086-025-68037686

Fax: 0086-025-68035151