

eIF4E (Phospho-S209) polyclonal antibody

Catalog: BS94012

Host: Rabbit

Reactivity: Human, Mouse, Rat

Background:

The initiation of protein synthesis in eukaryotic cells is regulated by interactions between protein initiation factors and RNA molecules. The eukaryotic initiation complex eIF4F exists in vitro as a trimeric complex of eIF4E, eIF4A and eIF4G. Together, the complex allows ribosome binding to mRNA by inducing the unwinding of mRNA secondary structures. eIF4E binds to the mRNA "cap" during an early step in the initiation of protein synthesis. eIF4A acts as an ATP-dependent RNA helicase. eIF4G acts as a bridge between eIF4E, eIF4A and the eIF3 complex.

Product:

Rabbit IgG, 1mg/ml in PBS with 0.02% sodium azide, 50% glycerol, pH7.2

Molecular Weight:

25 kDa

Swiss-Prot:

P06730(Human) P63073(Mouse) P63074(Rat)

Purification&Purity:

ProA affinity purified

Applications:

WB:1:1,000-1:5,000

ICC:1:50-1:200

IHC:1:50-1:200

Storage&Stability:

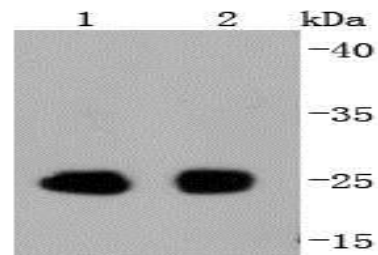
Store at +4 °C after thawing. Aliquot store at -20 °C or -80 °C. Avoid repeated freeze / thaw cycles.

Specificity:

eIF4E (Phospho-S209) polyclonal antibody detects endogenous levels of eIF4E protein only when phosphory-

lated at S209.

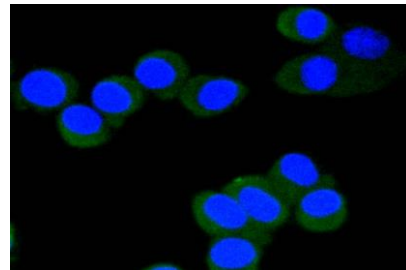
DATA:



Western blot analysis of Phospho-eIF4E(S209) on different lysates using anti-Phospho-eIF4E(S209) antibody at 1/1,000 dilution. Positive control:

Lane 1: Mouse spleen

Lane 2: Rat spleen



ICC staining Phospho-eIF4E(S209) in N2A cells (green). The nuclear counter stain is DAPI (blue). Cells were fixed in paraformaldehyde, permeabilised with 0.25% Triton X100/PBS.

Note:

For research use only, not for use in diagnostic procedure.

Bioworld Technology, Inc.

Add: 1660 South Highway 100, Suite 500 St. Louis Park, MN 55416, USA.

Email: info@bioworld.com

Tel: 6123263284

Fax: 6122933841

Bioworld technology, co. Ltd.

Add: No 9, weidi road Qixia District Nanjing, 210046, P. R. China.

Email: info@biogot.com

Tel: 0086-025-68037686

Fax: 0086-025-68035151