

MLKL (phospho-S345) polyclonal antibody

Catalog: BS94021

Host: Rabbit

Reactivity: Mouse

BackGround:

Pseudokinase that plays a key role in TNF-induced necroptosis, a programmed cell death process. Activated following phosphorylation by RIPK3, leading to homo-trimerization, localization to the plasma membrane and execution of programmed necrosis characterized by calcium influx and plasma membrane damage. Does not have protein kinase activity.

Product:

Rabbit IgG, 1mg/ml in PBS with 0.02% sodium azide, 50% glycerol, pH7.2

Molecular Weight:

54 kDa

Swiss-Prot:

Q9D2Y4(Mouse)

Purification&Purity:

ProA affinity purified

Applications:

IHC:1:50-1:100

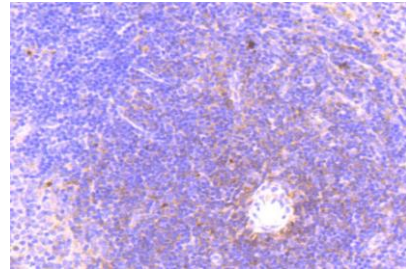
Storage&Stability:

Store at +4 °C after thawing. Aliquot store at -20 °C or -80 °C. Avoid repeated freeze / thaw cycles.

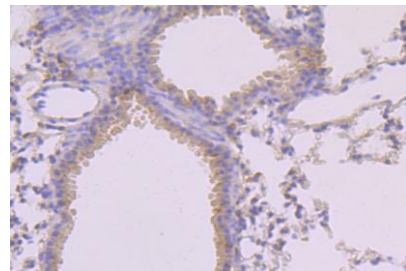
Specificity:

MLKL (phospho-S345) polyclonal antibody detects endogenous levels of MLKL protein only when phosphorylated at S345.

DATA:



Immunohistochemical analysis of paraffin-embedded mouse spleen tissue using anti-MLKL (phospho S345) antibody. Counter stained with hematoxylin.



Immunohistochemical analysis of paraffin-embedded mouse lung tissue using anti-MLKL (phospho S345) antibody. Counter stained with hematoxylin.

Note:

For research use only, not for use in diagnostic procedure.

Bioworld Technology, Inc.

Add: 1660 South Highway 100, Suite 500 St. Louis Park, MN 55416, USA.

Email: info@bioworld.com

Tel: 6123263284

Fax: 6122933841

Bioworld technology, co. Ltd.

Add: No 9, weidi road Qixia District Nanjing, 210046, P. R. China.

Email: info@biogot.com

Tel: 0086-025-68037686

Fax: 0086-025-68035151