

PKC α (Phospho-T638) polyclonal antibody

Catalog: BS94053

Host: Rabbit

Reactivity: Human, Mouse, Rat

BackGround:

Members of the protein kinase C (PKC) family play a key regulatory role in a variety of cellular functions including cell growth and differentiation, gene expression, hormone secretion and membrane function. PKCs were originally identified as serine/threonine protein kinases whose activity was dependent on calcium and phospholipids. Diacylglycerols (DAG) and tumor-promoting phorbol esters bind to and activate PKC. PKCs can be subdivided into many different isoforms (α , β I, β II, γ , δ , ϵ , ζ , η , θ , λ /I, μ and ν). Patterns of expression for each PKC isoform differ among tissues and PKC family members exhibit clear differences in their cofactor dependencies. For instance, the kinase activities of PKC δ and ϵ are independent of Ca^{2+} . On the other hand, most of the other PKC members possess phorbol ester-binding activities and kinase activities.

Product:

Rabbit IgG, 1mg/ml in PBS with 0.02% sodium azide, 50% glycerol, pH7.2

Molecular Weight:

77 kDa

Swiss-Prot:

P17252(Human) P20444(Mouse) P05696(Rat)

Purification&Purity:

ProA affinity purified

Applications:

WB:1:1,000-1:5,000

ICC:1:50-1:500

IHC:1:50-1:500

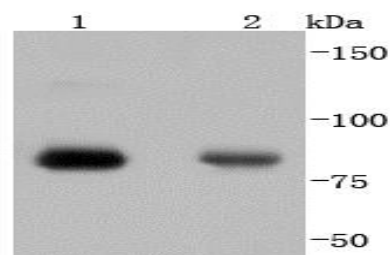
Storage&Stability:

Store at +4 °C after thawing. Aliquot store at -20 °C or -80 °C. Avoid repeated freeze / thaw cycles.

Specificity:

PKC α (Phospho-T638) polyclonal antibody detects endogenous levels of PKC α protein only when phosphorylated at T638.

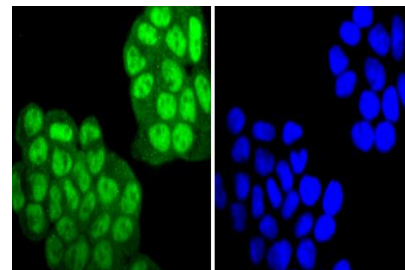
DATA:



Western blot analysis of Phospho-PKC alpha(T638) on different lysates using anti-Phospho-PKC alpha(T638) antibody at 1/1,000 dilution. Positive control:

Lane 1: HeLa

Lane 2: 293



ICC staining Phospho-PKC alpha(T638) in HeLa cells (green). The nuclear counter stain is DAPI (blue). Cells were fixed in paraformaldehyde, permeabilised with 0.25% Triton X100/PBS.

Note:

For research use only, not for use in diagnostic procedure.

Bioworld Technology, Inc.

Add: 1660 South Highway 100, Suite 500 St. Louis Park, MN 55416, USA.

Email: info@bioworld.com

Tel: 6123263284

Fax: 6122933841

Bioworld technology, co. Ltd.

Add: No 9, weidi road Qixia District Nanjing, 210046, P. R. China.

Email: info@biogot.com

Tel: 0086-025-68037686

Fax: 0086-025-68035151