

ER α (Phospho-S118) polyclonal antibody

Catalog: BS94082

Host: Rabbit

Reactivity: Human

BackGround:

Estrogen receptor alpha (ER α , ER, ESR, ESRA, Era, NR3A1, estrogen receptor 1) is a ligand-activated transcription factor composed of several domains important for hormone binding, DNA binding and activation of transcription. Alternative splicing results in several ER α mRNA transcripts, which differ primarily in their 5' untranslated regions. ER α undergoes phosphorylation in response to estradiol binding. Human ER α is predominately phosphorylated on Ser 118 and to a lesser extent on Ser 104 and Ser 106. In response to activation of the mitogen-activated protein kinase pathway, phosphorylation occurs on Ser 118 and Ser 167. These serine residues are all located within the activation function 1 region of the N-terminal domain of ER α . In contrast, activation of protein kinase A increases the phosphorylation of Ser 236, which is located in the DNA-binding domain. Src kinase-dependent Tyr 537 phosphorylation may enhance estrogen binding to ER α . Mutation of Tyr 537 of the human ER α produces receptors having a range of constitutive activity.

Product:

Rabbit IgG, 1mg/ml in PBS with 0.02% sodium azide, 50% glycerol, pH7.2

Molecular Weight:

66 kDa

Swiss-Prot:

P03372(Human)

Purification&Purity:

ProA affinity purified

Applications:

WB:1:1,000

ICC:1:50-1:200

IHC:1:50-1:200

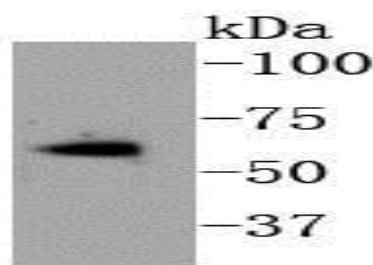
Storage&Stability:

Store at +4 °C after thawing. Aliquot store at -20 °C or -80 °C. Avoid repeated freeze / thaw cycles.

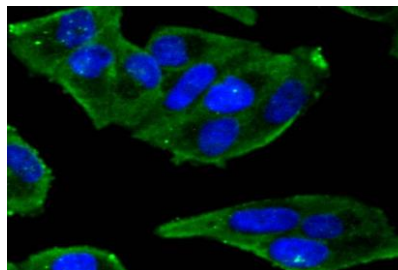
Specificity:

ER α (Phospho-S118) polyclonal antibody detects endogenous levels of ER α protein only when phosphorylated at S118.

DATA:



Western blot analysis of Estrogen Receptor alpha(Phospho S118) on MCF-7 cell lysates using anti-phospho-Estrogen Receptor alpha(S118) antibody at 1/1,000 dilution.



ICC staining phospho-Estrogen Receptor alpha(S118) in HeLa cells (green). The nuclear counter stain is DAPI (blue). Cells were fixed in paraformaldehyde, permeabilised with 0.25% Triton X100/PBS.

Note:

For research use only, not for use in diagnostic procedure.

Bioworld Technology, Inc.

Add: 1660 South Highway 100, Suite 500 St. Louis Park, MN 55416, USA.

Email: info@bioworld.com

Tel: 6123263284

Fax: 6122933841

Bioworld technology, co. Ltd.

Add: No 9, weidi road Qixia District Nanjing, 210046, P. R. China.

Email: info@biogot.com

Tel: 0086-025-68037686

Fax: 0086-025-68035151