

## HSP27 (Phospho-S82) polyclonal antibody

Catalog: BS94084

Host: Rabbit

Reactivity: Human, Mouse, Rat

### BackGround:

HSP 27 is a constitutively expressed cytoplasmic protein that co-localizes to the nucleus upon stress-induced insult. Heat shock, cytokines and hormones are among the factors that stimulate the synthesis of HSP 27. The intracellular concentration of the mammalian heat shock protein, HSP 27, increases several-fold after heat shock and other metabolic stresses, and is closely associated with the acquisition of thermotolerance. MAP kinase-activated protein kinase-2 phosphorylates HSP 27 on Serine residues Ser 15, Ser 78 and Ser 82, which are phosphorylated in vivo in response to growth factors and heat shock. Ser 15, Ser 78 and Ser 82 occur in the sequence motif RXXS, which is recognized by ribosomal protein S6 kinase II.

### Product:

Rabbit IgG, 1mg/ml in PBS with 0.02% sodium azide, 50% glycerol, pH7.2

### Molecular Weight:

27 kDa

### Swiss-Prot:

P04792(Human) P14602(Mouse) P42930(Rat)

### Purification&Purity:

ProA affinity purified

### Applications:

WB:1:1,000-1:2,000

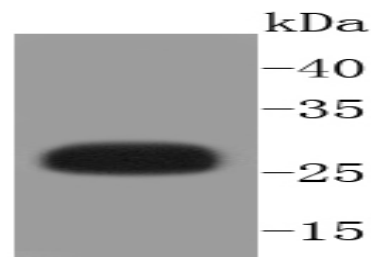
### Storage&Stability:

Store at +4 °C after thawing. Aliquot store at -20 °C or -80 °C. Avoid repeated freeze / thaw cycles.

### Specificity:

HSP27 (Phospho-S82) polyclonal antibody detects endogenous levels of HSP27 protein only when phosphorylated at S82.

### DATA:



Western blot analysis of Phospho-Hsp27(S82) on human skeletal muscle lysates using anti-Phospho-Hsp27(S82) antibody at 1/1,000 dilution.

### Note:

For research use only, not for use in diagnostic procedure.

### Bioworld Technology, Inc.

Add: 1660 South Highway 100, Suite 500 St. Louis Park, MN 55416, USA.

Email: [info@bioworld.com](mailto:info@bioworld.com)

Tel: 6123263284

Fax: 6122933841

### Bioworld technology, co. Ltd.

Add: No 9, weidi road Qixia District Nanjing, 210046, P. R. China.

Email: [info@biogot.com](mailto:info@biogot.com)

Tel: 0086-025-68037686

Fax: 0086-025-68035151