

Raf1 (Phospho-S259) polyclonal antibody

Catalog: BS94090

Host: Rabbit

Reactivity: Human, Mouse, Rat

Background:

Raf-1 is a ubiquitously expressed cytoplasmic protein with intrinsic serine/threonine kinase activity. Raf-1, or c-Raf, is the cellular homolog of v-Raf, the product of the transforming gene of the 3611 strain of murine sarcoma virus. The unregulated kinase activity of the v-Raf protein is associated with cellular transformation and mitogenesis. Raf-1 is normally suppressed by its regulatory N-terminal domain. Raf-1 is activated in response to a variety of tyrosine kinase receptors as well as in response to pp60v-Src expression. Specifically, Raf-1 is phosphorylated in the catalytic domain at Ser 338 and, to a lesser extent, Ser 339. This phosphorylation requires the co-activation of PI 3-kinase and the Ras signaling pathway. Raf-1 is also phosphorylated on Tyr 340 and 341, which induces the phosphorylation of MEK. Phosphorylation of Ser 621 is essential for the catalytic activity of Raf-1 and downregulation by c-AMP-dependent protein kinase A (PKA). PKA also phosphorylates Raf-1 on Ser 43 and Ser 259. PKA phosphorylation of Ser 259 inhibits Raf-1 and decreases the phosphorylation necessary for Raf-1 activation at Ser 338.

Product:

Rabbit IgG, 1mg/ml in PBS with 0.02% sodium azide, 50% glycerol, pH7.2

Molecular Weight:

73 kDa

Swiss-Prot:

P04049(Human) Q99N57(Mouse) P11345(Rat)

Purification&Purity:

ProA affinity purified

Applications:

WB:1:1,000-1:2,000

IHC:1:50-1:200

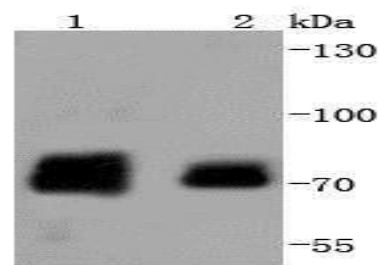
Storage&Stability:

Store at +4 °C after thawing. Aliquot store at -20 °C or -80 °C. Avoid repeated freeze / thaw cycles.

Specificity:

Raf1 (Phospho-S259) polyclonal antibody detects endogenous levels of Raf1 protein only when phosphorylated at S259.

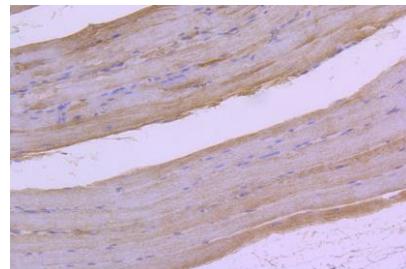
DATA:



Western blot analysis of Phospho-Raf1(S259) on different lysates using anti-Phospho-Raf1(S259) antibody at 1/1,000 dilution. Positive control:

Lane 1: Human skeletal muscle

Lane 2: HeLa



Immunohistochemical analysis of paraffin-embedded rat skeletal muscle tissue using anti-Phospho-Raf1(S259) antibody. Counter stained with hematoxylin.

Note:

For research use only, not for use in diagnostic procedure.

Bioworld Technology, Inc.

Add: 1660 South Highway 100, Suite 500 St. Louis Park, MN 55416, USA.

Email: info@bioworld.com

Tel: 6123263284

Fax: 6122933841

Bioworld technology, co. Ltd.

Add: No 9, weidi road Qixia District Nanjing, 210046, P. R. China.

Email: info@biogot.com

Tel: 0086-025-68037686

Fax: 0086-025-68035151