

CREB Rabbit monoclonal antibody

Catalog: BS9811M

Host: Rabbit

Reactivity: Human, Mouse, Rat, Zebra fish

Background:

Cyclic AMP Response Element Binding protein (CREB) is a basic / leucine zipper transcription factor that binds the cyclic AMP response element (CRE) and activates transcription in response to a variety of extracellular signals including neurotransmitters, hormones, membrane depolarization, and growth and neurotrophic factors. Activation of CREB is dependent upon the phosphorylation of serine 133. Phosphorylation occurs via p44 / 42 MAP kinase and p90RSK and also via p38 MAP kinase and MSK 1. Although CREB will bind DNA independent of its phosphorylation state, only the phosphorylated form is competent as a transcription factor. CREB binding protein (CBP), a transcriptional coactivator that directly interacts with CREB, binds to CREB in the region of serine 133.

Product:

Rabbit IgG, 1mg/ml in PBS with 0.02% sodium azide, 50% glycerol, pH7.2

Molecular Weight:

~ 38 kDa

Swiss-Prot:

P16220

Purification&Purity:

Protein A affinity purified

Applications:

WB: 1:1000-1:5000 IHC/ICC/IF: 1:50-1:200

IP: 1:50-1:200 FC: 1:10-1:100

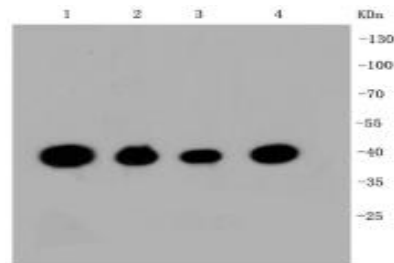
Storage&Stability:

Store at 4 °C short term. Aliquot and store at -20 °C long term. Avoid freeze-thaw cycles.

Specificity:

This antibody detects endogenous levels of CREB and does not cross-react with related proteins.

DATA:



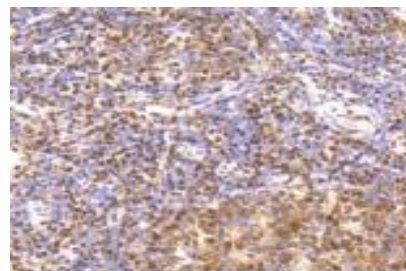
Western blot (WB) analysis of CREB Rabbit mAb at 1:1000 dilution

Lane1:Hela whole cell lysate

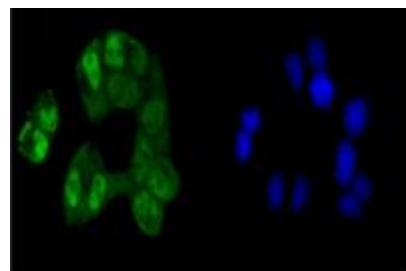
Lane2:HepG2 whole cell lysate

Lane3:Jurkat whole cell lysate

Lane4:NIH/3T3 whole cell lysate



Immunohistochemical analysis of paraffin-embedded human tonsil tissue using anti-CREB antibody. Counter stained with hematoxylin.



ICC staining CREB in Hela cells (green). The nuclear counter stain is DAPI (blue).

Cells were fixed in paraformaldehyde, permeabilised with 0.25% Triton *100/PBS.

Note:

For research use only, not for use in diagnostic procedure.

Bioworld Technology, Inc.

Add: 1660 South Highway 100, Suite 500 St. Louis Park, MN 55416, USA.

Email: info@bioworld.com

Tel: 6123263284

Fax: 6122933841

Bioworld technology, co. Ltd.

Add: No 9, weidi road Qixia District Nanjing, 210046, P. R. China.

Email: info@biogot.com

Tel: 0086-025-68037686

Fax: 0086-025-68035151