

Ras Rabbit monoclonal antibody

Catalog: BS9812M

Host: Rabbit

Reactivity: Human, Mouse, Rat, Zebra fish

BackGround:

Ras superfamily is a protein superfamily of small GTPases, which are all related, to a degree, to the Ras protein subfamily (the key human members of which are KRAS, NRAS, and HRAS). Receptor tyrosine kinases and G protein-coupled receptors activate Ras, which then stimulates the Raf-MEK-MAPK pathway. GTPase-activating proteins (GAP) normally facilitate the inactivation of Ras. However, research studies have shown that in 30% of human tumors, point mutations in Ras prevent the GAP-mediated inhibition of this pathway. The most common oncogenic Ras mutation found in tumors is Gly12 to Asp12 (G12D), which prevents Ras inactivation, possibly by increasing the overall rigidity of the protein.

Product:

Rabbit IgG, 1mg/ml in PBS with 0.02% sodium azide, 50% glycerol, pH7.2

Molecular Weight:

~ 18 kDa

Swiss-Prot:

P01111/P01112/P01116

Purification&Purity:

Protein A affinity purified

Applications:

WB: 1:1000-1:5000

IP: 1:50-1:200

FC: 1:10-1:100

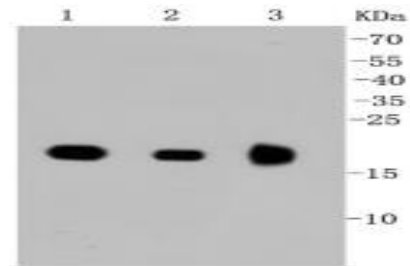
Storage&Stability:

Store at 4 °C short term. Aliquot and store at -20 °C long term. Avoid freeze-thaw cycles.

Specificity:

This antibody is predicted to react with H-Ras, N-Ras and K-Ras.

DATA:

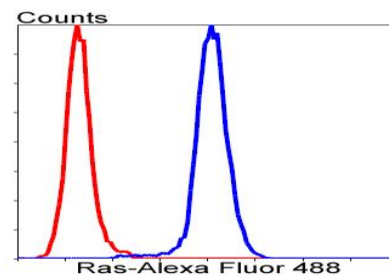


Western blot (WB) analysis of Ras Rabbit mAb at 1:1000 dilution

Lane1:MCF7 whole cell lysate

Lane2:293T whole cell lysate

Lane3:The brain tissue lysate of Mouse



Flow cytometric analysis of HeLa cells with Ras antibody at 1/50 dilution (blue) compared with an unlabelled control (cells without incubation with primary antibody; red). Alexa Fluor 488-conjugated goat anti rabbit IgG was used as the secondary antibody.

Note:

For research use only, not for use in diagnostic procedure.

Bioworld Technology, Inc.

Add: 1660 South Highway 100, Suite 500 St. Louis Park, MN 55416, USA.

Email: info@bioworld.com

Tel: 6123263284

Fax: 6122933841

Bioworld technology, co. Ltd.

Add: No 9, weidi road Qixia District Nanjing, 210046, P. R. China.

Email: info@biogot.com

Tel: 0086-025-68037686

Fax: 0086-025-68035151