

ALAS1 Rabbit monoclonal antibody

Catalog: BS9823M

Host: Rabbit

Reactivity: Human

BackGround:

5-aminolevulinic synthase 1 (ALAS-H) and 2 (ALAS-E) are two isoforms of ALAS, an enzyme catalyzing the first step of the heme biosynthetic pathway in mammals. The erythroid-specific isoenzyme, ALAS-E, regulates the first step of hematopoietic cell differentiation and iron metabolism in the liver. ALAS-H is a housekeeping protein which mediates synthesis of early heme in the mitochondria of most cells. Succinyl CoA associates with ALAS-E in protein conformation change and translocation of ALAS-E into the mitochondria and does not interact with ALAS-H. The ALAS-E 5'-flanking region contains binding sites for nuclear activators such as GATA-1, NF-E2 and EKLF. Since the ALAS gene maps to the X chromosome, mutation of the gene leads to the pyridoxine-refractory X-linked sideroblastic anemia.

Product:

Rabbit IgG, 1mg/ml in PBS with 0.02% sodium azide, 50% glycerol, pH7.2

Molecular Weight:

~ 71 kDa

Swiss-Prot:

P13196

Purification&Purity:

Protein A affinity purified

Applications:

WB: 1:1000-1:5000

ICC/IF: 1:50-1:200

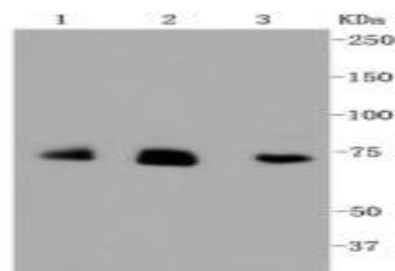
Storage&Stability:

Store at 4 °C short term. Aliquot and store at -20 °C long term. Avoid freeze-thaw cycles.

Specificity:

This antibody detects endogenous levels of ALAS and does not cross-react with related proteins.

DATA:

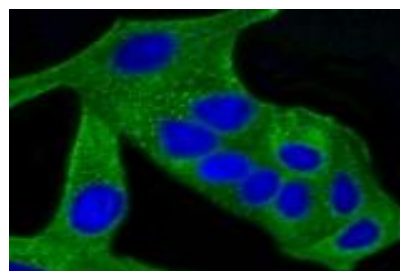


Western blot (WB) analysis of ALAS1 Rabbit mAb at 1:1000 dilution

Lane1:JAR whole cell lysate

Lane2:HUVEC whole cell lysate

Lane3:Hela whole cell lysate



ICC staining Alas1 in HeLa cells (green). The nuclear counter stain is DAPI (blue).

Cells were fixed in paraformaldehyde, permeabilised with 0.25% Triton *100/PBS

Note:

For research use only, not for use in diagnostic procedure.

Bioworld Technology, Inc.

Add: 1660 South Highway 100, Suite 500 St. Louis Park, MN 55416, USA.

Email: info@bioworld.com

Tel: 6123263284

Fax: 6122933841

Bioworld technology, co. Ltd.

Add: No 9, weidi road Qixia District Nanjing, 210046, P. R. China.

Email: info@biogot.com

Tel: 0086-025-68037686

Fax: 0086-025-68035151