

## RPS3 Rabbit monoclonal antibody

Catalog: BS9824M

Host: Rabbit

Reactivity: Human, Mouse, Rat

### Background:

Ribosomal subunits are synthesized in the nucleus, and mature 40S and 60S subunits are exported stoichiometrically into the cytoplasm. Both 40S and 60S subunits are composed of four RNA species and approximately 80 structurally distinct proteins. Mitochondrial ribosomes consist of a small 28S subunit and a large 39S subunit. Ribosomal proteins have the ability to pass through the nuclear envelope in the native state, making them the largest of the structures accommodated by the nuclear pore complexes. The nuclear export of ribosomal subunits is a unidirectional, saturable and energy-dependent process. Ribosomal Protein S3 a member of the 40S subunit and plays a role in translation and ribosome maturation. Specifically, Ribosomal Protein S3 mediates the formation of the mRNA binding site 3' of the codon in the decoding site. In addition, Ribosomal Protein S3 is involved in DNA damage recognition as shown by its affinity for abasic sites and 7,8-dihydro-8-oxoguanine residues and its interaction with human base excision repair (BER) proteins OGG1 and Ref-1.

### Product:

Rabbit IgG, 1mg/ml in PBS with 0.02% sodium azide, 50% glycerol, pH7.2

### Molecular Weight:

~ 26 kDa

### Swiss-Prot:

P23396

### Purification&Purity:

Protein A affinity purified

### Applications:

WB: 1:500-1:1000

IHC/ICC/IF: 1:50-1:200

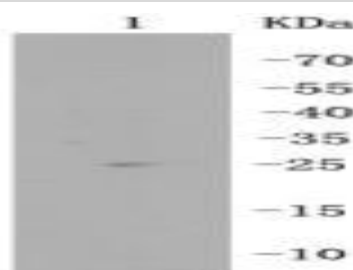
### Storage&Stability:

Store at 4 °C short term. Aliquot and store at -20 °C long term. Avoid freeze-thaw cycles.

### Specificity:

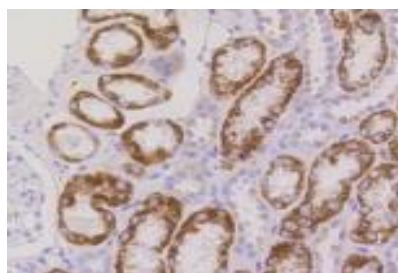
This antibody detects endogenous levels of RPS3 and does not cross-react with related proteins.

### DATA:

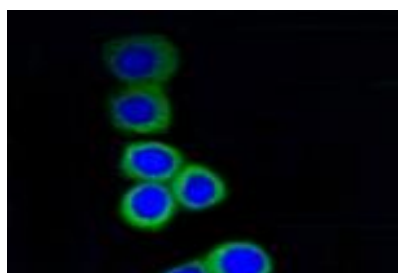


Western blot (WB) analysis of RPS3 Rabbit mAb at 1:500 dilution

Lane1:PC12 whole cell lysate



Immunohistochemical analysis of paraffin-embedded human kidney tissue using anti-RPS3 antibody. Counter stained with hematoxylin



ICC staining RPS3 in N2A cells (green). The nuclear counter stain is DAPI (blue).

Cells were fixed in paraformaldehyde, permeabilised with 0.25% Triton \*100/PBS

### Note:

For research use only, not for use in diagnostic procedure.

### Bioworld Technology, Inc.

Add: 1660 South Highway 100, Suite 500 St. Louis Park, MN 55416, USA.

Email: [info@bioworld.com](mailto:info@bioworld.com)

Tel: 6123263284

Fax: 6122933841

### Bioworld technology, co. Ltd.

Add: No 9, weidi road Qixia District Nanjing, 210046, P. R. China.

Email: [info@biogot.com](mailto:info@biogot.com)

Tel: 0086-025-68037686

Fax: 0086-025-68035151



## PRODUCT DATA SHEET

Bioworld Technology, Inc.

---

---

### **Bioworld Technology, Inc.**

**Add:** 1660 South Highway 100, Suite 500 St. Louis Park,  
MN 55416, USA.

**Email:** [info@bioworld.com](mailto:info@bioworld.com)

**Tel:** 6123263284

**Fax:** 6122933841

### **Bioworld technology, co. Ltd.**

**Add:** No 9, weidi road Qixia District Nanjing, 210046,  
P. R. China.

**Email:** [info@biogot.com](mailto:info@biogot.com)

**Tel:** 0086-025-68037686

**Fax:** 0086-025-68035151