

## Filamin 1 Rabbit monoclonal antibody

Catalog: BS9826M

Host: Rabbit

Reactivity: Human, Mouse, Rat

### BackGround:

Caldesmon, Filamin 1, nebulin and villin are differentially expressed and regulated Actin binding proteins. Both muscular (CDh) and non-muscular (CDI) forms of caldesmon have been identified and each has been shown to bind to Actin as well as to calmodulin and Myosin. CDh is expressed predominantly on thin filaments in smooth muscle, whereas CDI is widely expressed in nonmuscle tissues and cells. Filamin 1, which is ubiquitously expressed and exists as a homodimer, functions to crosslink Actin to filaments. Nebulin is a large filamentous protein specific to muscle tissue that may function as a ruler for filament length. Several isoforms of nebulin, ranging from 700 to 900 kDa, are produced by alternative exon usage. Villin is Ca<sup>2+</sup>-regulated and is the major structural component of the brush border of absorptive cells.

### Product:

Rabbit IgG, 1mg/ml in PBS with 0.02% sodium azide, 50% glycerol, pH7.2

### Molecular Weight:

~ 280 kDa

### Swiss-Prot:

P21333

### Purification&Purity:

Protein A affinity purified

### Applications:

WB: 1:1000-1:5000

IHC/ICC/IF: 1:50-1:200

FC: 1:10-1:100

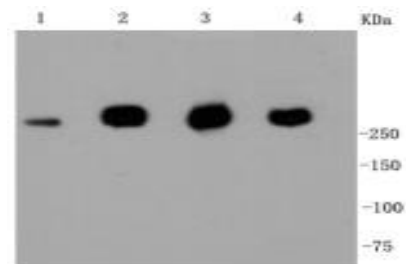
### Storage&Stability:

Store at 4 °C short term. Aliquot and store at -20 °C long term. Avoid freeze-thaw cycles.

### Specificity:

This antibody detects endogenous levels of Filamin 1 and does not cross-react with related proteins.

### DATA:



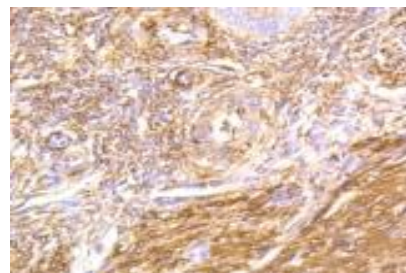
Western blot (WB) analysis of Filamin 1 Rabbit mAb at 1:1000 dilution

Lane1:MCF-7 whole cell lysate

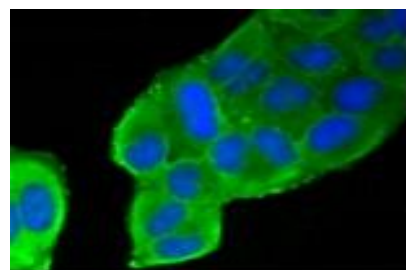
Lane2:Jurkat whole cell lysate

Lane3:Hela whole cell lysate

Lane4:NIH/3T3 whole cell lysate



Immunohistochemical analysis of paraffin-embedded human uterus tissue using anti-Filamin 1 antibody. Counter stained with hematoxylin.



ICC staining Filamin 1 in HeLa cells (green). The nuclear counter stain is DAPI (blue). Cells were fixed in paraformaldehyde, permeabilised with 0.25% Triton \*100/PBS.

### Note:

For research use only, not for use in diagnostic procedure.

### Bioworld Technology, Inc.

Add: 1660 South Highway 100, Suite 500 St. Louis Park, MN 55416, USA.

Email: [info@bioworld.com](mailto:info@bioworld.com)

Tel: 6123263284

Fax: 6122933841

### Bioworld technology, co. Ltd.

Add: No 9, weidi road Qixia District Nanjing, 210046, P. R. China.

Email: [info@biogot.com](mailto:info@biogot.com)

Tel: 0086-025-68037686

Fax: 0086-025-68035151



## PRODUCT DATA SHEET

Bioworld Technology, Inc.

---

---

### **Bioworld Technology, Inc.**

**Add:** 1660 South Highway 100, Suite 500 St. Louis Park,  
MN 55416, USA.

**Email:** [info@bioworld.com](mailto:info@bioworld.com)

**Tel:** 6123263284

**Fax:** 6122933841

### **Bioworld technology, co. Ltd.**

**Add:** No 9, weidi road Qixia District Nanjing, 210046,  
P. R. China.

**Email:** [info@biogot.com](mailto:info@biogot.com)

**Tel:** 0086-025-68037686

**Fax:** 0086-025-68035151