

Cyclin D1 Rabbit monoclonal antibody

Catalog: BS9827M

Host: Rabbit

Reactivity: Human, Mouse, Rat

Background:

Considerable effort directed towards the identification of G1 cyclins has led to the isolation of cyclin D, cyclin C and cyclin E. Of these, cyclin D corresponds to a putative human oncogene, designated PRAD1, which maps at the site of the Bcl1 rearrangement in certain lymphomas and leukemias. Two additional human type D cyclins, as well as their mouse homologs, have been identified. Evidence has established that members of the cyclin D family function to regulate phosphorylation of the retinoblastoma gene product, thereby activating E2F transcription factors.

Product:

Rabbit IgG, 1mg/ml in PBS with 0.02% sodium azide, 50% glycerol, pH7.2

Molecular Weight:

~ 36 kDa

Swiss-Prot:

P24385

Purification&Purity:

Protein A affinity purified

Applications:

WB: 1:1000-1:5000

IHC/ICC/IF: 1:50-1:200

IP: 1:50-1:200

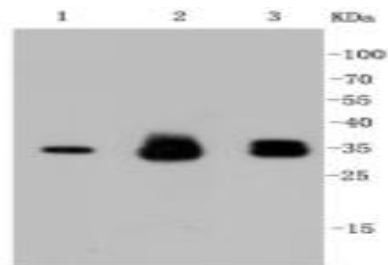
Storage&Stability:

Store at 4 °C short term. Aliquot and store at -20 °C long term. Avoid freeze-thaw cycles.

Specificity:

This antibody detects endogenous levels of Cyclin D1 and does not cross-react with related proteins.

DATA:

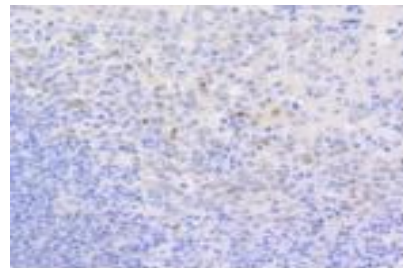


Western blot (WB) analysis of Cyclin D1 Rabbit mAb at 1:1000 dilution

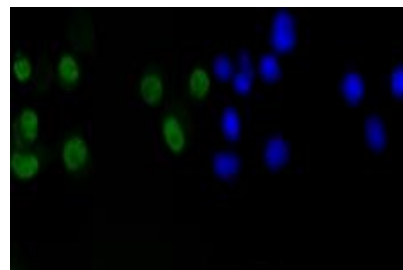
Lane1:Hela whole cell lysate

Lane2:PC12 whole cell lysate

Lane3:SH-SY-5Y whole cell lysate



Immunohistochemical analysis of paraffin-embedded human tonsil tissue using anti-Cyclin D1 antibody. Counter stained with hematoxylin.



ICC staining Cyclin D1 in N2A cells (green). The nuclear counter stain is DAPI (blue). Cells were fixed in paraformaldehyde, permeabilised with 0.25% Triton *100/PBS.

Note:

For research use only, not for use in diagnostic procedure.

Bioworld Technology, Inc.

Add: 1660 South Highway 100, Suite 500 St. Louis Park, MN 55416, USA.

Email: info@bioworld.com

Tel: 6123263284

Fax: 6122933841

Bioworld technology, co. Ltd.

Add: No 9, weidi road Qixia District Nanjing, 210046, P. R. China.

Email: info@biogot.com

Tel: 0086-025-68037686

Fax: 0086-025-68035151