

Cytokeratin 20 Rabbit monoclonal antibody

Catalog: BS9831M

Host: Rabbit

Reactivity: Human, Rat

BackGround:

Cytokeratin 20 is abundantly expressed in goblet cells and enterocytes of the gastrointestinal tract, and Cytokeratin 20 is a useful marker of pancreatic and colorectal cancer. Cytokeratin 20 is also helpful in distinguishing different types of highly related carcinomas, such as renal oncocytomas from renal cell carcinomas.

Product:

Rabbit IgG, 1mg/ml in PBS with 0.02% sodium azide, 50% glycerol, pH7.2

Molecular Weight:

~ 48 kDa

Swiss-Prot:

P35900

Purification&Purity:

Protein A affinity purified

Applications:

WB: 1:1000-1:5000 IHC/ICC/IF: 1:50-1:200

IP: 1:50-1:200 FC: 1:10-1:100

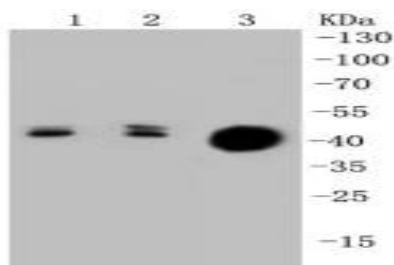
Storage&Stability:

Store at 4 °C short term. Aliquot and store at -20 °C long term. Avoid freeze-thaw cycles.

Specificity:

This antibody detects endogenous levels of Cytokeratin 20 and does not cross-react with related proteins.

DATA:

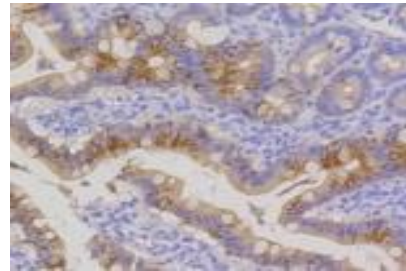


Western blot (WB) analysis of Cytokeratin 20 Rabbit mAb at 1:1000 dilution

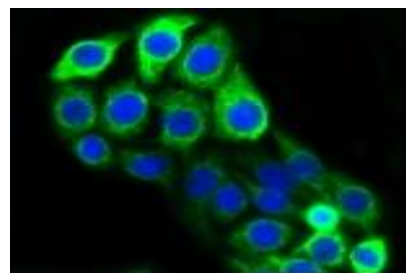
Lane1:Lovo whole cell lysate

Lane2:HCT116 whole cell lysate

Lane3:CRC whole cell lysate



Immunohistochemical analysis of paraffin-embedded rat small intestine tissue using anti-Cytokeratin 20 antibody. Counter stained with hematoxylin.



ICC staining Cytokeratin 20 in CRC cells (green). The nuclear counter stain is DAPI (blue). Cells were fixed in paraformaldehyde, permeabilised with 0.25% Triton *100/PBS.

Note:

For research use only, not for use in diagnostic procedure.

Bioworld Technology, Inc.

Add: 1660 South Highway 100, Suite 500 St. Louis Park, MN 55416, USA.

Email: info@bioworld.com

Tel: 6123263284

Fax: 6122933841

Bioworld technology, co. Ltd.

Add: No 9, weidi road Qixia District Nanjing, 210046, P. R. China.

Email: info@biogot.com

Tel: 0086-025-68037686

Fax: 0086-025-68035151