

## Integrin $\beta$ 1 Rabbit monoclonal antibody

Catalog: BS9835M

Host: Rabbit

Reactivity: Human, Mouse, Rat

### BackGround:

Integrins are heterodimers composed of noncovalently associated transmembrane  $\alpha$  and  $\beta$  subunits. The 16  $\alpha$  and 8  $\beta$  subunits heterodimerize to produce more than 20 different receptors. Most integrin receptors bind ligands that are components of the extracellular matrix, including fibronectin, collagen and vitronectin. Certain integrins can also bind to soluble ligands such as fibrinogen, or to counterreceptors on adjacent cells such as the intracellular adhesion molecules (ICAMs), leading to aggregation of cells. Ligands serve to cross-link or cluster integrins by binding to adjacent integrin receptors; both receptor clustering and ligand occupancy are necessary for the activation of integrin-mediated responses. In addition to mediating cell adhesion and cytoskeletal organization, integrins function as signaling receptors. Signals transduced by integrins play a role in many biological processes, including cell growth, differentiation, migration and apoptosis.

### Product:

Rabbit IgG, 1mg/ml in PBS with 0.02% sodium azide, 50% glycerol, pH7.2

### Molecular Weight:

88-150 kDa

### Swiss-Prot:

P05556

### Purification&Purity:

Protein A affinity purified

### Applications:

WB: 1:1000-1:2000

IHC: 1:50-1:200

FC: 1:50-1:100

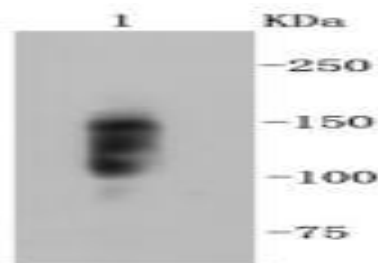
### Storage&Stability:

Store at 4 °C short term. Aliquot and store at -20 °C long term. Avoid freeze-thaw cycles.

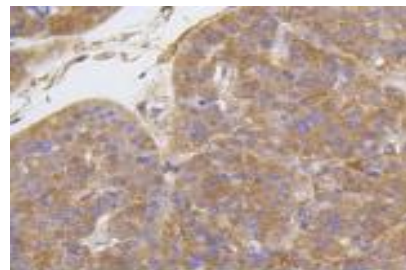
### Specificity:

This antibody detects endogenous levels of Integrin  $\beta$ 1 and does not cross-react with related proteins.

### DATA:



Western blot (WB) analysis of Integrin  $\beta$ 1 Rabbit mAb at 1:500 dilution  
Lane1: The liver tissue lysate of Human



Immunohistochemical analysis of paraffin-embedded human liver cancer tissue using anti-Integrin  $\beta$ 1 antibody. Counter stained with hematoxylin.

### Note:

For research use only, not for use in diagnostic procedure.

### Bioworld Technology, Inc.

Add: 1660 South Highway 100, Suite 500 St. Louis Park, MN 55416, USA.

Email: [info@bioworld.com](mailto:info@bioworld.com)

Tel: 6123263284

Fax: 6122933841

### Bioworld technology, co. Ltd.

Add: No 9, weidi road Qixia District Nanjing, 210046, P. R. China.

Email: [info@biogot.com](mailto:info@biogot.com)

Tel: 0086-025-68037686

Fax: 0086-025-68035151