

## COL17A1 Rabbit monoclonal antibody

Catalog: BS9839M

Host: Rabbit

Reactivity: Human, Mouse, Rat

### Background:

The extensive collagen family comprises several chain types, including fibril-forming interstitial collagens and basement membrane collagens, with each type containing multiple isoforms. Products of the COL gene family, collagens are characterized as fibrous, extracellular matrix proteins with high tensile strength that constitute the major components of connective tissues, such as tendons and cartilage. All collagens contain a triple helix domain and frequently show lateral self-association in order to form complex connective tissues. Collagen Type XVII, also designated BP180, represents a type II transmembrane, epithelial adhesion molecule that plays a role in cell migration and differentiation. The full length Collagen Type XVII protein is expressed in hemidesmosomes of keratinocytes. Proteolytic shedding of Collagen Type XVII results in a species in the extracellular matrix, and this process may be mediated by a disintegrin and metalloprotease (ADAM) family member. The BPAG2 gene, which encodes the Collagen Type XVII protein, maps to human chromosome 10q25.1. Mutations in this gene result in Bullous pemphigoid, an inflammatory subepidermal blistering skin disease associated with an IgG autoimmune response to Collagen Type XVII.

### Product:

Rabbit IgG, 1mg/ml in PBS with 0.02% sodium azide, 50% glycerol, pH7.2

### Molecular Weight:

~ 130, 180 kDa

### Swiss-Prot:

Q9UMD9

### Purification&Purity:

Protein A affinity purified

### Applications:

WB: 1:1000-1:2000

ICC/IF: 1:50-1:200

IHC: 1:50-1:200

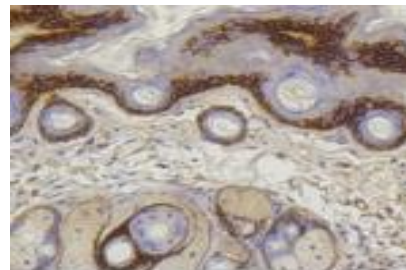
### Storage&Stability:

Store at 4 °C short term. Aliquot and store at -20 °C long term. Avoid freeze-thaw cycles.

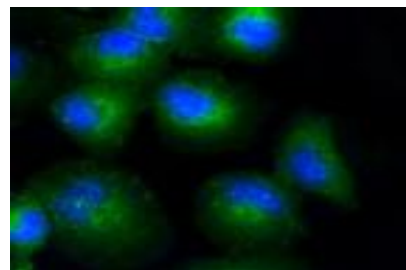
### Specificity:

This antibody detects endogenous levels of COL17A1 and does not cross-react with related proteins.

### DATA:



Immunohistochemical analysis of paraffin-embedded mouse skin tissue using anti-Collagen XVII antibody. Counter stained with hematoxylin.



ICC staining Collagen XVII in HUVEC cells (green). The nuclear counter stain is DAPI (blue). Cells were fixed in paraformaldehyde, permeabilised with 0.25% Triton \*100/PBS.

### Note:

For research use only, not for use in diagnostic procedure.

### Bioworld Technology, Inc.

Add: 1660 South Highway 100, Suite 500 St. Louis Park, MN 55416, USA.

Email: [info@bioworld.com](mailto:info@bioworld.com)

Tel: 6123263284

Fax: 6122933841

### Bioworld technology, co. Ltd.

Add: No 9, weidi road Qixia District Nanjing, 210046, P. R. China.

Email: [info@biogot.com](mailto:info@biogot.com)

Tel: 0086-025-68037686

Fax: 0086-025-68035151



## PRODUCT DATA SHEET

Bioworld Technology, Inc.

---

---

### **Bioworld Technology, Inc.**

**Add:** 1660 South Highway 100, Suite 500 St. Louis Park,  
MN 55416, USA.

**Email:** [info@bioworld.com](mailto:info@bioworld.com)

**Tel:** 6123263284

**Fax:** 6122933841

### **Bioworld technology, co. Ltd.**

**Add:** No 9, weidi road Qixia District Nanjing, 210046,  
P. R. China.

**Email:** [info@biogot.com](mailto:info@biogot.com)

**Tel:** 0086-025-68037686

**Fax:** 0086-025-68035151