

CDK5 Rabbit monoclonal antibody

Catalog: BS9841M

Host: Rabbit

Reactivity: Human, Mouse, Rat

BackGround:

Cell cycle progression is controlled in part by a family of cyclin proteins and cyclin dependent kinases (Cdks). Cdk proteins work in concert with the cyclins to phosphorylate key substrates involved in each phase of cell cycle progression. Another family of proteins, Cdk inhibitors, also plays a role in regulating cell cycle by binding to cyclin-Cdk complexes and modulating their activity. Several Cdk proteins have been identified, including Cdk2-Cdk8, PCTAIRE-1-3, PITALRE and PITSLRE. Cdk5 is thought to be involved in the G1/S transition of the cell cycle and is highly expressed in mature neurons. Activity of Cdk5 increases significantly during neuronal differentiation. Cdk5 has been postulated to be a neurofilament or Tau protein kinase, based on its ability to phosphorylate these proteins in vitro.

Product:

Rabbit IgG, 1mg/ml in PBS with 0.02% sodium azide, 50% glycerol, pH7.2

Molecular Weight:

~ 33 kDa

Swiss-Prot:

Q00535

Purification&Purity:

Protein A affinity purified

Applications:

WB: 1:500-1:1000

IHC: 1:50-1:200

FC: 1:50-1:100

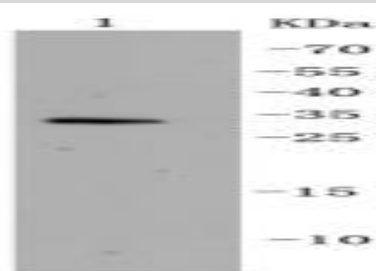
Storage&Stability:

Store at 4 °C short term. Aliquot and store at -20 °C long term. Avoid freeze-thaw cycles.

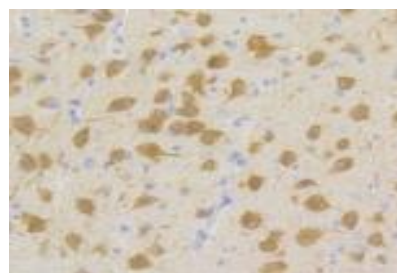
Specificity:

This antibody detects endogenous levels of CDK5 and does not cross-react with related proteins.

DATA:



Western blot (WB) analysis of CDK5 Rabbit mAb at 1:500 dilution
Lane 1: HeLa whole cell lysate



Immunohistochemical analysis of paraffin-embedded rat brain tissue using anti-Cdk5 antibody. Counter stained with hematoxylin.

Note:

For research use only, not for use in diagnostic procedure.

Bioworld Technology, Inc.

Add: 1660 South Highway 100, Suite 500 St. Louis Park, MN 55416, USA.

Email: info@bioworld.com

Tel: 6123263284

Fax: 6122933841

Bioworld technology, co. Ltd.

Add: No 9, weidi road Qixia District Nanjing, 210046, P. R. China.

Email: info@biogot.com

Tel: 0086-025-68037686

Fax: 0086-025-68035151