

DUSP6 Rabbit monoclonal antibody

Catalog: BS9842M

Host: Rabbit

Reactivity: Human, Mouse, Rat

Background:

Dual specificity phosphatases (DSPs) are a subclass of the protein tyrosine phosphatase (PTP) gene superfamily, which are selective for dephosphorylating critical phosphothreonine and phosphotyrosine residues within MAP kinases. DSP gene expression is induced by a host of growth factors and/or cellular stresses, thereby negatively regulating MAP kinase superfamily members including MAPK/ERK, SAPK/JNK and p38. The members of the dual-specificity phosphatase protein family include MKP-1/CL100 (3CH134), VHR, PAC1, MKP-2, hVH-3 (B23), hVH-5, MKP-3, MKP-X and MKP-4.

Product:

Rabbit IgG, 1mg/ml in PBS with 0.02% sodium azide, 50% glycerol, pH7.2

Molecular Weight:

~ 42 kDa

Swiss-Prot:

Q16828

Purification&Purity:

Protein A affinity purified

Applications:

WB: 1:1000-1:5000

ICC/IF: 1:50-1:200

IHC: 1:200-1:500

FC: 1:50-1:100

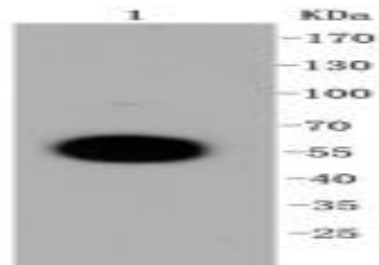
Storage&Stability:

Store at 4 °C short term. Aliquot and store at -20 °C long term. Avoid freeze-thaw cycles.

Specificity:

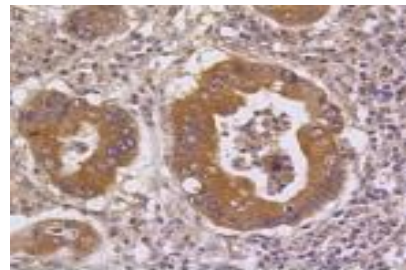
This antibody detects endogenous levels of DUSP6 and does not cross-react with related proteins.

DATA:

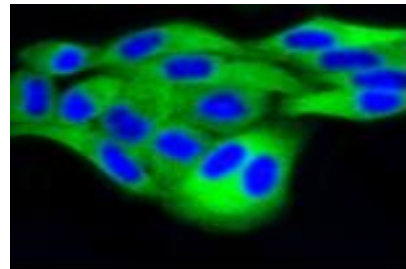


Western blot (WB) analysis of DUSP6 Rabbit mAb at 1:1000 dilution

Lane1: The pancreas tissue lysate of Mouse



Immunohistochemical analysis of paraffin-embedded human gastric carcinoma tissue using anti-DUSP6 antibody. Counter stained with hematoxylin.



ICC staining DUSP6 in HeLa cells (green). The nuclear counter stain is DAPI (blue).

Cells were fixed in paraformaldehyde, permeabilised with 0.25% Triton *100/PBS.

Note:

For research use only, not for use in diagnostic procedure.

Bioworld Technology, Inc.

Add: 1660 South Highway 100, Suite 500 St. Louis Park, MN 55416, USA.

Email: info@bioworld.com

Tel: 6123263284

Fax: 6122933841

Bioworld technology, co. Ltd.

Add: No 9, weidi road Qixia District Nanjing, 210046, P. R. China.

Email: info@biogot.com

Tel: 0086-025-68037686

Fax: 0086-025-68035151