

## SHP1 Rabbit monoclonal antibody

Catalog: BS9843M

Host: Rabbit

Reactivity: Human, Mouse, Rat

### BackGround:

SHP-1 (PTPN6) is a non-receptor protein tyrosine phosphatase that is expressed primarily in hematopoietic cells. The enzyme is composed of two SH2 domains, a tyrosine phosphatase catalytic domain, and a carboxy-terminal regulatory domain. SHP-1 removes phosphates from target proteins to downregulate several tyrosine kinase-regulated pathways. In hematopoietic cells, the amino-terminal SH2 domain of SHP-1 binds to tyrosine phosphorylated erythropoietin receptors (EpoR) to negatively regulate hematopoietic growth.

### Product:

Rabbit IgG, 1mg/ml in PBS with 0.02% sodium azide, 50% glycerol, pH7.2

### Molecular Weight:

~ 68 kDa

### Swiss-Prot:

P29350

### Purification&Purity:

Protein A affinity purified

### Applications:

WB: 1:500-1:1000

ICC/IF: 1:50-1:200

IHC: 1:50-1:500

FC: 1:50-1:100

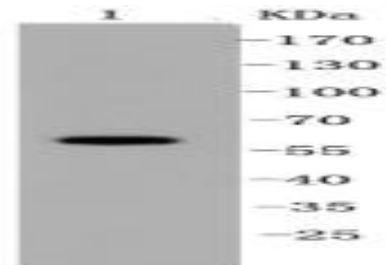
### Storage&Stability:

Store at 4 °C short term. Aliquot and store at -20 °C long term. Avoid freeze-thaw cycles.

### Specificity:

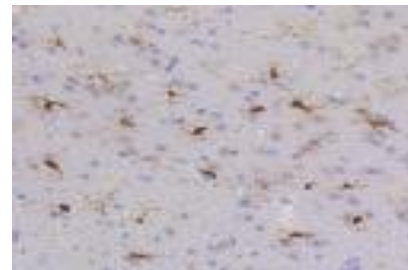
This antibody detects endogenous levels of SHP1 and does not cross-react with related proteins.

### DATA:

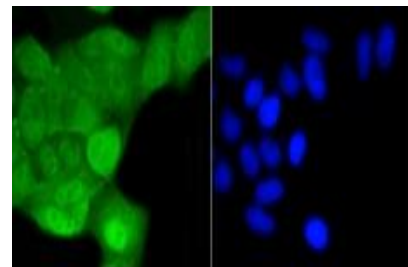


Western blot (WB) analysis of SHP1 Rabbit mAb at 1:500 dilution

Lane 1: Raji whole cell lysate

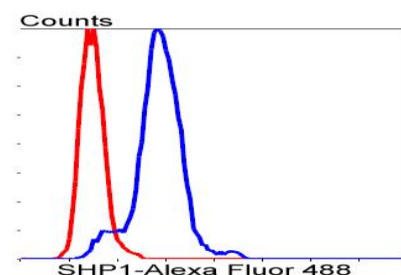


Immunohistochemical analysis of paraffin-embedded rat brain tissue using anti-SHP1 antibody. Counter stained with hematoxylin.



ICC staining SHP1 in HeLa cells (green). The nuclear counter stain is DAPI (blue).

Cells were fixed in paraformaldehyde, permeabilised with 0.25% Triton \*100/PBS.



### Bioworld Technology, Inc.

Add: 1660 South Highway 100, Suite 500 St. Louis Park, MN 55416, USA.

Email: [info@bioworld.com](mailto:info@bioworld.com)

Tel: 6123263284

Fax: 6122933841

### Bioworld technology, co. Ltd.

Add: No 9, weidi road Qixia District Nanjing, 210046, P. R. China.

Email: [info@biogot.com](mailto:info@biogot.com)

Tel: 0086-025-68037686

Fax: 0086-025-68035151



## PRODUCT DATA SHEET

Bioworld Technology, Inc.

Flow cytometric analysis of Hela cells with SHP1 antibody at 1/50 dilution (blue) compared with an unlabelled control (cells without incubation with primary antibody; red). Alexa Fluor 488-conjugated goat anti

rabbit IgG was used as the secondary antibody.

**Note:**

For research use only, not for use in diagnostic procedure.

---

**Bioworld Technology, Inc.**

Add: 1660 South Highway 100, Suite 500 St. Louis Park,  
MN 55416, USA.

Email: [info@bioworld.com](mailto:info@bioworld.com)

Tel: 6123263284

Fax: 6122933841

**Bioworld technology, co. Ltd.**

Add: No 9, weidi road Qixia District Nanjing, 210046,  
P. R. China.

Email: [info@biogot.com](mailto:info@biogot.com)

Tel: 0086-025-68037686

Fax: 0086-025-68035151