

Caspase-2 Rabbit monoclonal antibody

Catalog: BS9856M

Host: Rabbit

Reactivity: Human, Mouse, Rat

Background:

Caspase-2 (Nedd2, ICH-1) is an aspartate-specific cysteine protease that is activated in response to various apoptotic stimuli. Caspase-2 is unique among the caspases in that it has features of both upstream caspases (long pro-domain) and downstream caspases (DEXD substrate specificity). Caspase-2 is highly expressed in the brain during development and is expressed at low levels in adult tissue. Specifically, caspase-2 localizes to the mitochondria, the Golgi, the cytoplasm and the nucleus. Caspase-2 exists as two isoforms, caspase-2L and caspase-2S, which are produced by alternative splicing and differ in their N- and C-termini. Caspase-2L acts as a positive regulator of apoptosis, whereas caspase-2S functions as a negative regulator of apoptosis. Following apoptotic stimuli, the caspase-2L precursor undergoes cleavage at Asp 153 to produce a fragment (p30). The p30 fragment undergoes further cleavage to generate a fragment containing amino acids 153-308 (p18) and a fragment containing amino acids 317-435 (p13 or p14). As apoptosis progresses, the p13 (p14) fragment can undergo further processing to yield a fragment containing amino acids 331-435 (p12).

Product:

Rabbit IgG, 1mg/ml in PBS with 0.02% sodium azide, 50% glycerol, pH7.2

Molecular Weight:

~ 48 kDa

Swiss-Prot:

P42575

Purification&Purity:

Protein A affinity purified

Applications:

WB: 1:1000-1:2000

ICC/IF: 1:50-1:200

IHC: 1:50-1:200

FC: 1:50-1:100

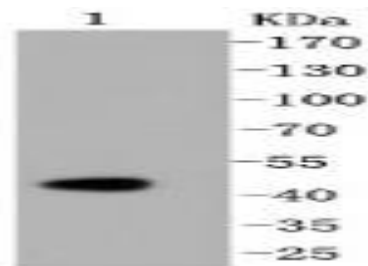
Storage&Stability:

Store at 4 °C short term. Aliquot and store at -20 °C long term. Avoid freeze-thaw cycles.

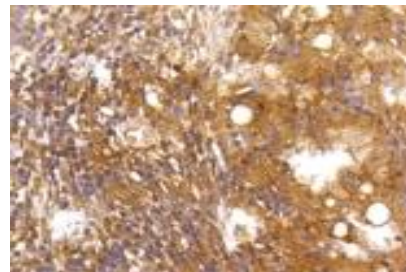
Specificity:

This antibody detects endogenous levels of Caspase-2 and does not cross-react with related proteins.

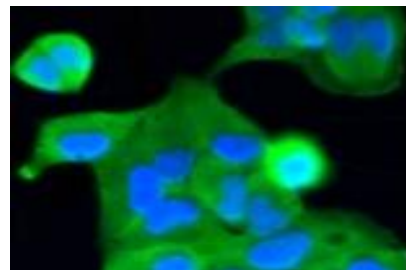
DATA:



Western blot (WB) analysis of Caspase-2 Rabbit mAb at 1:1000 dilution
Lane1:293 whole cell lysate



Immunohistochemical analysis of paraffin-embedded human lung cancer tissue using anti-Caspase-2 antibody. Counter stained with hematoxylin.



ICC staining Caspase-2 in HeLa cells (green). The nuclear counter stain is DAPI (blue). Cells were fixed in paraformaldehyde, permeabilised

Bioworld Technology, Inc.

Add: 1660 South Highway 100, Suite 500 St. Louis Park, MN 55416, USA.

Email: info@bioworld.com

Tel: 6123263284

Fax: 6122933841

Bioworld technology, co. Ltd.

Add: No 9, weidi road Qixia District Nanjing, 210046, P. R. China.

Email: info@biogot.com

Tel: 0086-025-68037686

Fax: 0086-025-68035151



PRODUCT DATA SHEET

Bioworld Technology, Inc.

with 0.25% Triton *100/PBS.

For research use only, not for use in diagnostic procedure.

Note:

Bioworld Technology, Inc.

Add: 1660 South Highway 100, Suite 500 St. Louis Park,
MN 55416, USA.

Email: info@bioworld.com

Tel: 6123263284

Fax: 6122933841

Bioworld technology, co. Ltd.

Add: No 9, weidi road Qixia District Nanjing, 210046,
P. R. China.

Email: info@biogot.com

Tel: 0086-025-68037686

Fax: 0086-025-68035151