

PHB Rabbit monoclonal antibody

Catalog: BS9857M

Host: Rabbit

Reactivity: Human, Mouse, Rat, Zebra fish

BackGround:

Prohibitin is an evolutionarily conserved protein that has antiproliferative activity. The gene encoding human prohibitin maps to chromosome 17q21 and is ubiquitously expressed. Prohibitin is a post-synthetically modified protein that is localized in the inner membrane of mitochondria, where it regulates the cell cycle by blocking the transition between the G1 and S phases, and on the plasma membrane of B cells, where it mediates B cell maturation.

Product:

Rabbit IgG, 1mg/ml in PBS with 0.02% sodium azide, 50% glycerol, pH7.2

Molecular Weight:

~ 30 kDa

Swiss-Prot:

P35232

Purification&Purity:

Protein A affinity purified

Applications:

WB: 1:1000-1:2000

ICC: 1:50-1:200

IHC: 1:200-1:500

FC: 1:50-1:100

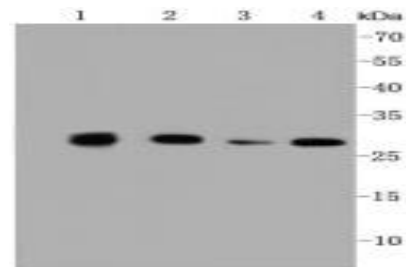
Storage&Stability:

Store at 4 °C short term. Aliquot and store at -20 °C long term. Avoid freeze-thaw cycles.

Specificity:

This antibody detects endogenous levels of PHB and does not cross-react with related proteins.

DATA:



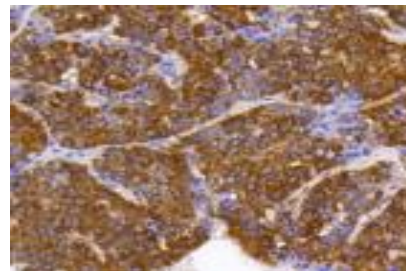
Western blot (WB) analysis of PHB Rabbit mAb at 1:1000 dilution

Lane1:293 whole cell lysate

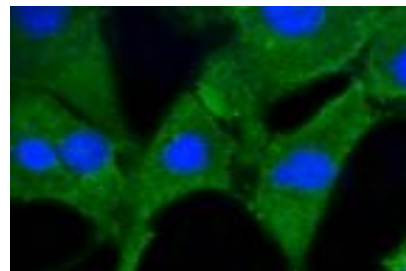
Lane2:Jurkat whole cell lysate

Lane3:The kidney tissue lysate of Mouse

Lane4:HepG2 whole cell lysate



Immunohistochemical analysis of paraffin-embedded human liver cancer tissue using anti-PHB antibody. Counter stained with hematoxylin.



ICC staining Prohibitin in NIH/3T3 cells (green). The nuclear counter stain is DAPI (blue). Cells were fixed in paraformaldehyde, permeabilised with 0.25% Triton *100/PBS.

Bioworld Technology, Inc.

Add: 1660 South Highway 100, Suite 500 St. Louis Park, MN 55416, USA.

Email: info@bioworld.com

Tel: 6123263284

Fax: 6122933841

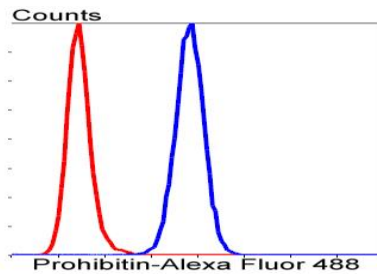
Bioworld technology, co. Ltd.

Add: No 9, weidi road Qixia District Nanjing, 210046, P. R. China.

Email: info@biogot.com

Tel: 0086-025-68037686

Fax: 0086-025-68035151



Flow cytometric analysis of HepG2 cells with PHB antibody at 1/50 dilution (blue) compared with an unlabelled control (cells without incubation with primary antibody; red). Alexa Fluor 488-conjugated goat anti rabbit IgG was used as the secondary antibody.

Note:

For research use only, not for use in diagnostic procedure.

Bioworld Technology, Inc.

Add: 1660 South Highway 100, Suite 500 St. Louis Park,
MN 55416, USA.

Email: info@bioworld.com

Tel: 6123263284

Fax: 6122933841

Bioworld technology, co. Ltd.

Add: No 9, weidi road Qixia District Nanjing, 210046,
P. R. China.

Email: info@biogot.com

Tel: 0086-025-68037686

Fax: 0086-025-68035151