

ERG Rabbit monoclonal antibody

Catalog: BS9883M

Host: Rabbit

Reactivity: Human, Mouse, Rat

BackGround:

Defects in ERG are a cause of Ewing sarcoma (ES). A highly malignant, metastatic, primitive small round cell tumor of bone and soft tissue that affects children and adolescents. It belongs to the Ewing sarcoma family of tumors, a group of morphologically heterogeneous neoplasms that share the same cytogenetic features. They are considered neural tumors derived from cells of the neural crest. Ewing sarcoma represents the less differentiated form of the tumors.

Product:

Rabbit IgG, 1mg/ml in PBS with 0.02% sodium azide, 50% glycerol, pH7.2

Molecular Weight:

~ 55 kDa

Swiss-Prot:

P11308

Purification&Purity:

Protein A affinity purified

Applications:

WB: 1:1000

ICC/IF: 1:50-1:200

IHC: 1:50-1:200

Storage&Stability:

Store at 4 °C short term. Aliquot and store at -20 °C long term. Avoid freeze-thaw cycles.

Specificity:

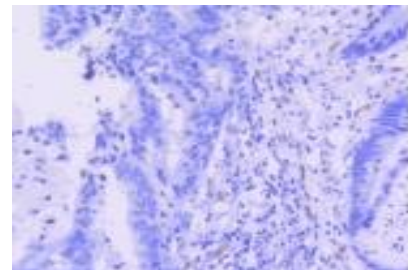
This antibody detects endogenous levels of ERG and does not cross-react with related proteins.

DATA:

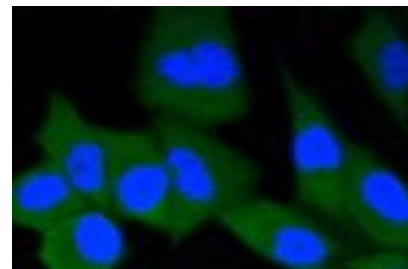


Western blot (WB) analysis of ERG Rabbit mAb at 1:1000 dilution

Lane 1: Jurkat whole cell lysate



Immunohistochemical analysis of paraffin-embedded human colon cancer tissue using anti-ERG antibody. Counter stained with hematoxylin.



ICC staining ERG in PC-3M cells (green). The nuclear counter stain is DAPI (blue). Cells were fixed in paraformaldehyde, permeabilised with 0.25% Triton *100/PBS.

Note:

For research use only, not for use in diagnostic procedure.

Bioworld Technology, Inc.

Add: 1660 South Highway 100, Suite 500 St. Louis Park, MN 55416, USA.

Email: info@bioworld.com

Tel: 6123263284

Fax: 6122933841

Bioworld technology, co. Ltd.

Add: No 9, weidi road Qixia District Nanjing, 210046, P. R. China.

Email: info@biogot.com

Tel: 0086-025-68037686

Fax: 0086-025-68035151