

CD20 Rabbit monoclonal antibody

Catalog: BS9888M

Host: Rabbit

Reactivity: Human, Monkey

BackGround:

CD20 is a leukocyte surface antigen consisting of four transmembrane regions and cytoplasmic N- and C-termini. The cytoplasmic domain of CD20 contains multiple phosphorylation sites, leading to additional isoforms. CD20 is expressed primarily on B cells but has also been detected on both normal and neoplastic T cells. CD20 functions as a calcium-permeable cation channel, and it is known to accelerate the G0 to G1 progression induced by IGF-1. CD20 is activated by the IGF-1 receptor via the alpha subunits of the heterotrimeric G proteins. Activation of CD20 significantly increases DNA synthesis and is thought to involve basic helix-loop-helix leucine zipper transcription factors.

Product:

Rabbit IgG, 1mg/ml in PBS with 0.02% sodium azide, 50% glycerol, pH7.2

Molecular Weight:

~ 33 kDa

Swiss-Prot:

P11836

Purification&Purity:

Protein A affinity purified

Applications:

WB: 1:1000-1:5000

IHC: 1:50-1:200

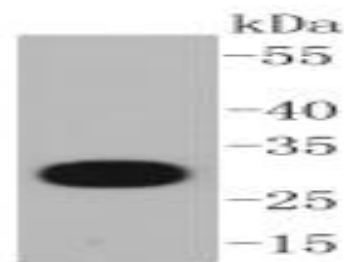
Storage&Stability:

Store at 4 °C short term. Aliquot and store at -20 °C long term. Avoid freeze-thaw cycles.

Specificity:

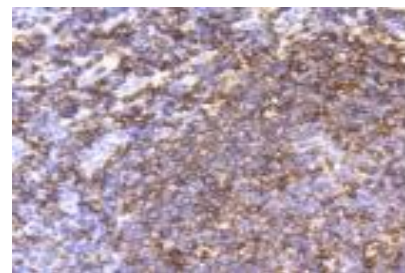
This antibody detects endogenous levels of CD20 and does not cross-react with related proteins.

DATA:



Western blot (WB) analysis of CD20 Rabbit mAb at 1:1000 dilution

Lane1:Raji whole cell lysate



Immunohistochemical analysis of paraffin-embedded human tonsil tissue using anti-CD20 antibody. Counter stained with hematoxylin.

Note:

For research use only, not for use in diagnostic procedure.

Bioworld Technology, Inc.

Add: 1660 South Highway 100, Suite 500 St. Louis Park, MN 55416, USA.

Email: info@bioworld.com

Tel: 6123263284

Fax: 6122933841

Bioworld technology, co. Ltd.

Add: No 9, weidi road Qixia District Nanjing, 210046, P. R. China.

Email: info@biogot.com

Tel: 0086-025-68037686

Fax: 0086-025-68035151