

Notch 1 Rabbit monoclonal antibody

Catalog: BS9902M

Host: Rabbit

Reactivity: Human, Mouse

Background:

Notch1 is a transmembrane protein functioning in development and the determination of cell fate. During maturation, the notch molecule is cleaved by a furin-like convertase at its extracellular domain. Upon binding to a ligand such as Delta1, or upon extracellular calcium depletion, the carboxy-terminal notch1 fragment is released and further cleaved between Gly1753 and Val1754. The resulting activated cytosolic fragment translocates to the nucleus where it activates transcription.

Product:

Rabbit IgG, 1mg/ml in PBS with 0.02% sodium azide, 50% glycerol, pH7.2

Molecular Weight:

~ 110 kDa

Swiss-Prot:

P46531

Purification&Purity:

Protein A affinity purified

Applications:

WB: 1:1000-1:2000

IHC/ICC/IF: 1:50-1:200

FC: 1:50-1:100

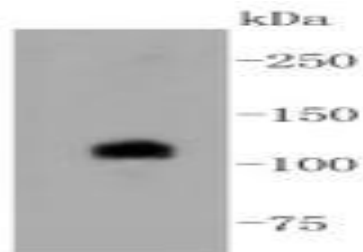
Storage&Stability:

Store at 4 °C short term. Aliquot and store at -20 °C long term. Avoid freeze-thaw cycles.

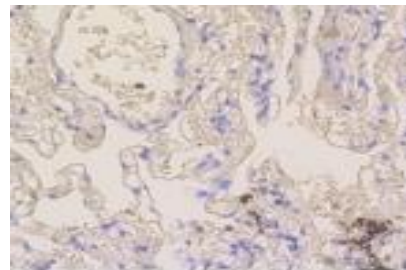
Specificity:

This antibody detects endogenous levels of Notch 1 and does not cross-react with related proteins.

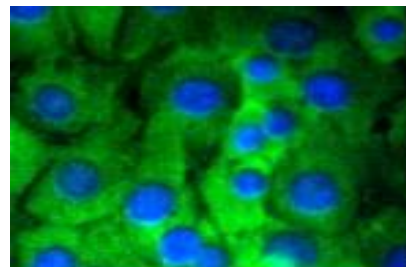
DATA:



Western blot (WB) analysis of Notch 1 Rabbit mAb at 1:1000 dilution
Lane1:HepG2 whole cell lysate



Immunohistochemical analysis of paraffin-embedded human lung tissue using anti-Notch 1 antibody. Counter stained with hematoxylin.



ICC staining Notch 1 in NIH/3T3 cells (green). The nuclear counter stain is DAPI (blue). Cells were fixed in paraformaldehyde, permeabilised with 0.25% Triton *100/PBS.

Note:

For research use only, not for use in diagnostic procedure.

Bioworld Technology, Inc.

Add: 1660 South Highway 100, Suite 500 St. Louis Park, MN 55416, USA.

Email: info@bioworld.com

Tel: 6123263284

Fax: 6122933841

Bioworld technology, co. Ltd.

Add: No 9, weidi road Qixia District Nanjing, 210046, P. R. China.

Email: info@biogot.com

Tel: 0086-025-68037686

Fax: 0086-025-68035151