

α -SMA Rabbit monoclonal antibody

Catalog: BS9908M

Host: Rabbit

Reactivity: Human, Mouse, Rat, Zebra fish

Background:

Defects in ACTA2 are the cause of aortic aneurysm familial thoracic type 6 (AAT6) [MIM:611788]. AATs are characterized by permanent dilation of the thoracic aorta usually due to degenerative changes in the aortic wall. They are primarily associated with a characteristic histologic appearance known as 'medial necrosis' or 'Erdheim cystic medial necrosis' in which there is degeneration and fragmentation of elastic fibers, loss of smooth muscle cells, and an accumulation of basophilic ground substance.

Product:

Rabbit IgG, 1mg/ml in PBS with 0.02% sodium azide, 50% glycerol, pH7.2

Molecular Weight:

~ 42 kDa

Swiss-Prot:

P62736

Purification&Purity:

Protein A affinity purified

Applications:

WB: 1:1000-1:5000

IHC: 1:50-1:200

FC: 1:50-1:100

Storage&Stability:

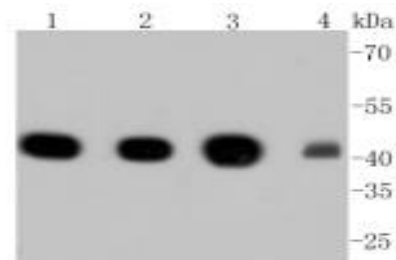
Store at 4 °C short term. Aliquot and store at -20 °C long term. Avoid freeze-thaw cycles.

Specificity:

This antibody detects endogenous levels of α -SMA and

does not cross-react with related proteins.

DATA:



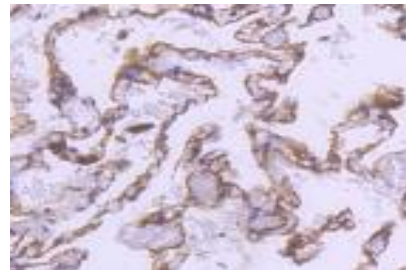
Western blot (WB) analysis of α -SMA Rabbit mAb at 1:1000 dilution

Lane1:A549 whole cell lysate

Lane2:Hela whole cell lysate

Lane3:NIH/3T3 whole cell lysate

Lane4:The heart tissue lysate of Mouse



Immunohistochemical analysis of paraffin-embedded human lung tissue using anti- α -SMA antibody. Counter stained with hematoxylin.

Note:

For research use only, not for use in diagnostic procedure.

Bioworld Technology, Inc.

Add: 1660 South Highway 100, Suite 500 St. Louis Park, MN 55416, USA.

Email: info@bioworld.com

Tel: 6123263284

Fax: 6122933841

Bioworld technology, co. Ltd.

Add: No 9, weidi road Qixia District Nanjing, 210046, P. R. China.

Email: info@biogot.com

Tel: 0086-025-68037686

Fax: 0086-025-68035151