

## MKLP1 Rabbit monoclonal antibody

Catalog: BS9910M

Host: Rabbit

Reactivity: Human, Mouse, Rat

### BackGround:

MKLP-1 (mitotic kinesin-like protein-1), represents a novel kinesin. Sequence analysis has also been shown to predict that MKLP-1 possesses features typical of nuclear proteins. Immunocytological studies have demonstrated that MKLP-1 moves from the nucleus early in mitosis and then to the midbody after cytokinesis. MKLP-1 has been shown to bundle antiparallel microtubules in vitro and to move them at rates comparable to spindle elongation in vivo. A hamster homolog of MKLP-1, designated CHO1 antigen, has also been isolated. Although apparently functionally equivalent with respect to microtubule bundling activity, there are significant differences between the human and hamster proteins at their C-termini, possibly due to alternative splicing or the presence of more than one MKLP-1 locus.

### Product:

Rabbit IgG, 1mg/ml in PBS with 0.02% sodium azide, 50% glycerol, pH7.2

### Molecular Weight:

### Swiss-Prot:

Q02241

### Purification&Purity:

Protein A affinity purified

### Applications:

WB: 1:1000-1:5000

ICC/IF: 1:50-1:200

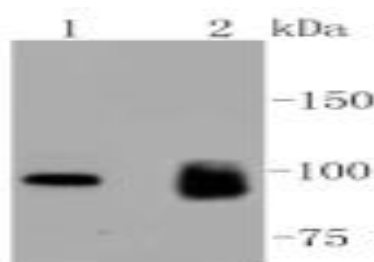
### Storage&Stability:

Store at 4 °C short term. Aliquot and store at -20 °C long term. Avoid freeze-thaw cycles.

### Specificity:

This antibody detects endogenous levels of MKLP1 and does not cross-react with related proteins.

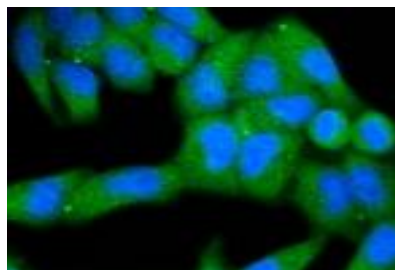
### DATA:



Western blot (WB) analysis of MKLP1 Rabbit mAb at 1:1000 dilution

Lane1:A549 whole cell lysate

Lane2:Hela whole cell lysate



ICC staining MKLP1 in HeLa cells (green). The nuclear counter stain is DAPI (blue). Cells were fixed in paraformaldehyde, permeabilised with 0.25% Triton X-100/PBS.

### Note:

For research use only, not for use in diagnostic procedure.

### Bioworld Technology, Inc.

Add: 1660 South Highway 100, Suite 500 St. Louis Park, MN 55416, USA.

Email: [info@bioworld.com](mailto:info@bioworld.com)

Tel: 6123263284

Fax: 6122933841

### Bioworld technology, co. Ltd.

Add: No 9, weidi road Qixia District Nanjing, 210046, P. R. China.

Email: [info@biogot.com](mailto:info@biogot.com)

Tel: 0086-025-68037686

Fax: 0086-025-68035151