

## JNK1/2/3 (Phospho-T183) Rabbit monoclonal antibody

Catalog: BS9939M

Host: Rabbit

Reactivity: Human, Mouse, Rat

### BackGround:

The human JNK1 (PRKM8, SAPK1, MAPK8) gene maps to chromosome 10q11.22 and shares 83% amino acid identity with JNK2. JNK1 is necessary for normal activation and differentiation of CD4 helper T (TH) cells into TH1 and TH2 effector cells. Capsaicin activates JNK1 and p38 in Ras-transformed human breast epithelial cells. Nitrogen oxides (NOx) upregulate JNK1 in addition to c-Fos, c-Jun and other signaling kinases, including MEKK1 and p38. JNK3 (MK10, MAPK10, PRKM10) is activated by pro-inflammatory cytokines and environmental stress by phosphorylating transcription factors such as c-Jun and ATF2. This is important for AP-1 transcriptional activity regulation. JNK3 is crucial for neuronal apoptosis (stress-induced).

### Product:

Rabbit IgG, 1mg/ml in PBS with 0.02% sodium azide, 50% glycerol, pH7.2

### Molecular Weight:

~ 46, 54 kDa

### Swiss-Prot:

P45983/P45984/P53779

### Purification&Purity:

Protein A affinity purified

### Applications:

WB: 1:1000-1:2000

IHC/ICC/IF: 1:50-1:200

FC: 1:50-1:100

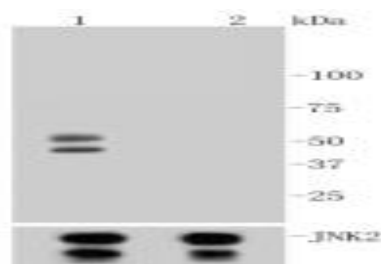
### Storage&Stability:

Store at 4 °C short term. Aliquot and store at -20 °C long term. Avoid freeze-thaw cycles.

### Specificity:

This antibody detects endogenous levels of JNK1 protein only when phosphorylated at Thr183. This antibody also recognizes JNK2 and JNK3 when phosphorylated at the corresponding residues.

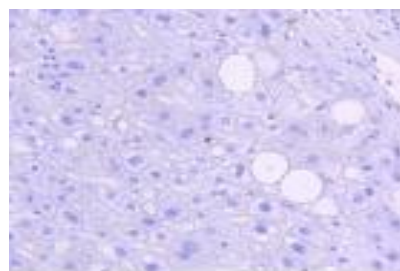
### DATA:



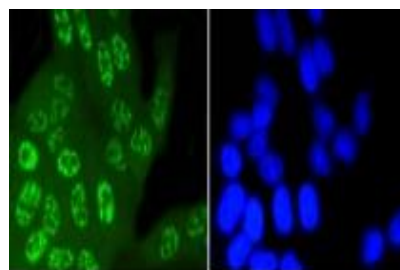
Western blot (WB) analysis of JNK1/2/3 (Phospho-T183) Rabbit mAb at 1:1000 dilution

Lane1:NIH/3T3 whole cell lysate treated with Anisomycin

Lane2:NIH/3T3 whole cell lysate



Immunohistochemical analysis of paraffin-embedded human liver tissue using anti-Phospho-JNK1/2/3(T183) antibody. Counter stained with hematoxylin.



ICC staining Phospho-JNK1/2/3(T183) in Hela cells (green). The nuclear counter stain is DAPI (blue). Cells were fixed in paraformaldehyde, permeabilised with 0.25% Triton \*100/PBS.

### Note:

For research use only, not for use in diagnostic procedure.

### Bioworld Technology, Inc.

Add: 1660 South Highway 100, Suite 500 St. Louis Park, MN 55416, USA.

Email: [info@bioworld.com](mailto:info@bioworld.com)

Tel: 6123263284

Fax: 6122933841

### Bioworld technology, co. Ltd.

Add: No 9, weidi road Qixia District Nanjing, 210046, P. R. China.

Email: [info@biogot.com](mailto:info@biogot.com)

Tel: 0086-025-68037686

Fax: 0086-025-68035151



## PRODUCT DATA SHEET

Bioworld Technology, Inc.

---

---

### **Bioworld Technology, Inc.**

**Add:** 1660 South Highway 100, Suite 500 St. Louis Park,  
MN 55416, USA.

**Email:** [info@bioworld.com](mailto:info@bioworld.com)

**Tel:** 6123263284

**Fax:** 6122933841

### **Bioworld technology, co. Ltd.**

**Add:** No 9, weidi road Qixia District Nanjing, 210046,  
P. R. China.

**Email:** [info@biogot.com](mailto:info@biogot.com)

**Tel:** 0086-025-68037686

**Fax:** 0086-025-68035151