

## PRMT5 Rabbit monoclonal antibody

Catalog: BS9940M

Host: Rabbit

Reactivity: Human, Mouse, Rat

### Background:

PRMT5, also designated JAK-binding protein 1, (JBP1), pICln, and two novel factors. PRMT5 binds the Sm proteins via their Arginine- and Glycine-rich (RG) domains, while pICln binds the Sm domains. PRMT5 is a distinct member of the protein-Arginine methyltransferase (PRMT) family, and predominantly localizes to the cytoplasm in a wide variety of tissues. PRMT5 also associates specifically with the transcription start site region of the cyclin E1 promoter, and, therefore, is involved in the control of transcription and proliferation.

### Product:

Rabbit IgG, 1mg/ml in PBS with 0.02% sodium azide, 50% glycerol, pH7.2

### Molecular Weight:

~ 70 kDa

### Swiss-Prot:

O14744

### Purification&Purity:

Protein A affinity purified

### Applications:

WB: 1:1000-1:2000

ICC/IF: 1:50-1:200

IHC: 1:50-1:200

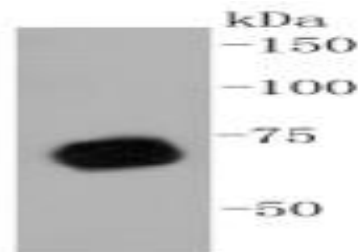
### Storage&Stability:

Store at 4 °C short term. Aliquot and store at -20 °C long term. Avoid freeze-thaw cycles.

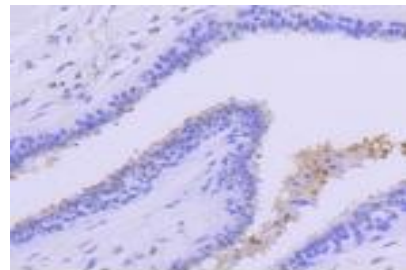
### Specificity:

This antibody detects endogenous levels of PRMT5 and does not cross-react with related proteins.

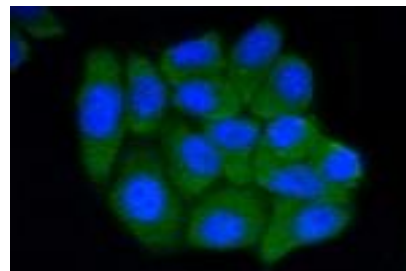
### DATA:



Western blot (WB) analysis of PRMT5 Rabbit mAb at 1:1000 dilution  
Lane1:A431 whole cell lysate



Immunohistochemical analysis of paraffin-embedded human breast carcinoma tissue using anti-PRMT5 antibody. Counter stained with hematoxylin.



ICC staining PRMT5 in HepG2 cells (green). The nuclear counter stain is DAPI (blue). Cells were fixed in paraformaldehyde, permeabilised with 0.25% Triton \*100/PBS.

### Note:

For research use only, not for use in diagnostic procedure.

### Bioworld Technology, Inc.

Add: 1660 South Highway 100, Suite 500 St. Louis Park, MN 55416, USA.

Email: [info@bioworld.com](mailto:info@bioworld.com)

Tel: 6123263284

Fax: 6122933841

### Bioworld technology, co. Ltd.

Add: No 9, weidi road Qixia District Nanjing, 210046, P. R. China.

Email: [info@biogot.com](mailto:info@biogot.com)

Tel: 0086-025-68037686

Fax: 0086-025-68035151