

## PKC $\beta$ Rabbit monoclonal antibody

Catalog: BS9941M

Host: Rabbit

Reactivity: Human, Mouse, Rat

### Background:

PKCs were originally identified as serine/threonine protein kinases whose activity was dependent on calcium and phospholipids. Diacylglycerols (DAG) and tumor promoting phorbol esters bind to and activate PKC. PKCs can be subdivided into at least two major classes including conventional (c) PKC isoforms ( $\alpha$ ,  $\beta$ I,  $\beta$ II and  $\gamma$ ) and novel (n) PKC isoforms ( $\delta$ ,  $\epsilon$ ,  $\zeta$ ,  $\eta$  and  $\theta$ ). Patterns of expression for each PKC isoform differs among tissues and PKC family members exhibit clear differences in their cofactor dependencies. For instance, the kinase activities of nPKC  $\delta$  and  $\epsilon$  are independent of  $\text{Ca}^{2+}$ . On the other hand, nPKC  $\delta$  and  $\epsilon$ , as well as all of the cPKC members, possess phorbol ester-binding activities and kinase activities.

### Product:

Rabbit IgG, 1mg/ml in PBS with 0.02% sodium azide, 50% glycerol, pH7.2

### Molecular Weight:

~ 82 kDa

### Swiss-Prot:

P05771

### Purification&Purity:

Protein A affinity purified

### Applications:

WB: 1:1000-1:2000

IHC/ICC/IF: 1:50-1:200

FC: 1:50-1:100

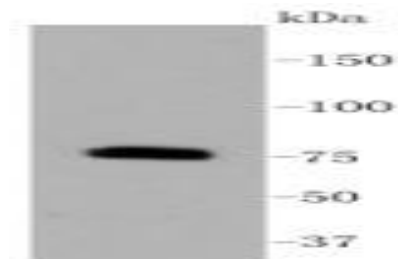
### Storage&Stability:

Store at 4 °C short term. Aliquot and store at -20 °C long term. Avoid freeze-thaw cycles.

### Specificity:

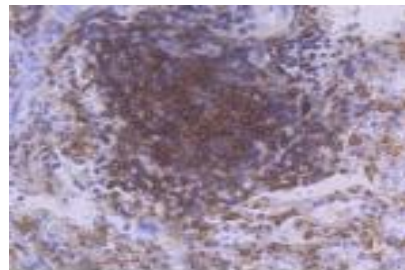
This antibody detects endogenous levels of PKC  $\beta$  and does not cross-react with related proteins.

### DATA:

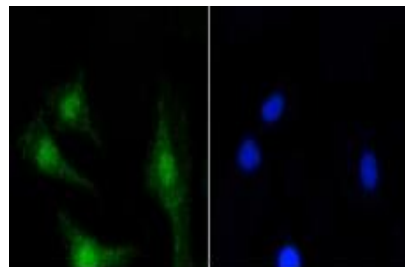


Western blot (WB) analysis of PKC  $\beta$  Rabbit mAb at 1:1000 dilution

Lane 1: Raji whole cell lysate



Immunohistochemical analysis of paraffin-embedded human spleen tissue using anti-PKC  $\beta$  antibody. Counter stained with hematoxylin.



ICC staining PKC beta 2 in SH-SY-5Y cells (green). The nuclear counter stain is DAPI (blue). Cells were fixed in paraformaldehyde, permeabilised with 0.25% Triton \*100/PBS.

### Note:

For research use only, not for use in diagnostic procedure.

### Bioworld Technology, Inc.

Add: 1660 South Highway 100, Suite 500 St. Louis Park, MN 55416, USA.

Email: [info@bioworld.com](mailto:info@bioworld.com)

Tel: 6123263284

Fax: 6122933841

### Bioworld technology, co. Ltd.

Add: No 9, weidi road Qixia District Nanjing, 210046, P. R. China.

Email: [info@biogot.com](mailto:info@biogot.com)

Tel: 0086-025-68037686

Fax: 0086-025-68035151