

Cytokeratin 15 Rabbit monoclonal antibody

Catalog: BS9947M

Host: Rabbit

Reactivity: Human, Mouse

BackGround:

Cytokeratin 15 is an intermediate filament (IF) type I protein that is responsible for the mechanical integrity of epithelial cells. Keratin family members are subdivided into cytokeratins and hair keratins. Cytokeratin 15 is a specific marker of stem cells of the hair-follicle bulge and may be a useful marker for diagnosis between basal cell carcinoma and trichoepithelioma. Trichoblastoma are benign neoplasms of follicular differentiation frequently found in nevus sebaceus. Many morphologic features are shared with nodular basal cell carcinoma, sometimes rendering a diagnosis difficult. Trichoblastoma and BCC show variable expression of Cytokeratin 15 and Cytokeratin 19, and absence of hair keratins.

Product:

Rabbit IgG, 1mg/ml in PBS with 0.02% sodium azide, 50% glycerol, pH7.2

Molecular Weight:

~ 49 kDa

Swiss-Prot:

P19012

Purification&Purity:

Protein A affinity purified

Applications:

WB: 1:1000-1:2000

IHC/IF: 1:50-1:200

FC: 1:50-1:100

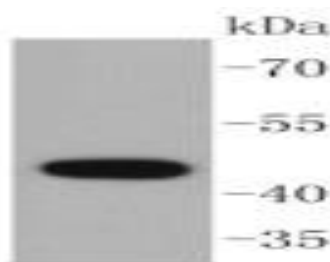
Storage&Stability:

Store at 4 °C short term. Aliquot and store at -20 °C long term. Avoid freeze-thaw cycles.

Specificity:

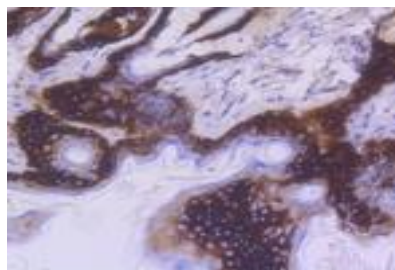
This antibody detects endogenous levels of Cytokeratin 15 and does not cross-react with related proteins.

DATA:



Western blot (WB) analysis of Cytokeratin 15 Rabbit mAb at 1:1000 dilution

Lane1:A431 whole cell lysate



Immunohistochemical analysis of paraffin-embedded mouse skin tissue using anti-Cytokeratin 15 antibody. Counter stained with hematoxylin.

Note:

For research use only, not for use in diagnostic procedure.

Bioworld Technology, Inc.

Add: 1660 South Highway 100, Suite 500 St. Louis Park, MN 55416, USA.

Email: info@bioworld.com

Tel: 6123263284

Fax: 6122933841

Bioworld technology, co. Ltd.

Add: No 9, weidi road Qixia District Nanjing, 210046, P. R. China.

Email: info@biogot.com

Tel: 0086-025-68037686

Fax: 0086-025-68035151