

PIM1 Rabbit monoclonal antibody

Catalog: BS9950M

Host: Rabbit

Reactivity: Human, Mouse

Background:

Pim-1 is a serine/threonine kinase that cooperates with c-Myc in lymphoid cell transformation. The expression of pim-1 increases during the progression from early to late G1, remaining high at the G1/S boundary and G2 phases of the cell cycle. Pim-1 is regulated at both the transcriptional and translational level, and it has been shown to be induced by IL-2 stimulation. Pim-1 also plays a role in T cell differentiation, and it has been shown to stimulate c-Myc-mediated apoptosis upstream of caspase-3-like proteases.

Product:

Rabbit IgG, 1mg/ml in PBS with 0.02% sodium azide, 50% glycerol, pH7.2

Molecular Weight:

~ 45 kDa

Swiss-Prot:

P11309

Purification&Purity:

Protein A affinity purified

Applications:

WB: 1:1000-1:2000

ICC/IF: 1:50-1:200

IHC: 1:50-1:200

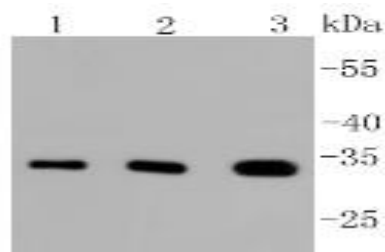
Storage&Stability:

Store at 4 °C short term. Aliquot and store at -20 °C long term. Avoid freeze-thaw cycles.

Specificity:

This antibody detects endogenous levels of PIM1 and does not cross-react with related proteins.

DATA:

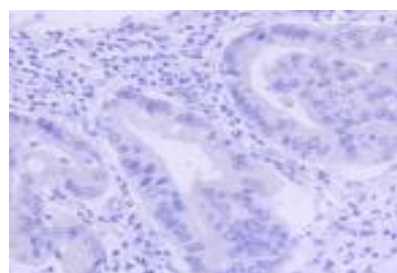


Western blot (WB) analysis of PIM1 Rabbit mAb at 1:1000 dilution

Lane1:BT-20 whole cell lysate

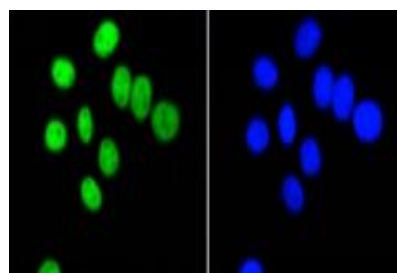
Lane2:HepG2 whole cell lysate

Lane3:SW480 whole cell lysate



Immunohistochemical analysis of paraffin-embedded human gastric

carcinoma tissue using anti-PIM1 antibody. Counter stained with hematoxylin.



ICC staining PIM1 in BT-20 cells (green). The nuclear counter stain is

DAPI (blue). Cells were fixed in paraformaldehyde, permeabilised with 0.25% Triton *100/PBS.

Note:

For research use only, not for use in diagnostic procedure.

Bioworld Technology, Inc.

Add: 1660 South Highway 100, Suite 500 St. Louis Park, MN 55416, USA.

Email: info@bioworld.com

Tel: 6123263284

Fax: 6122933841

Bioworld technology, co. Ltd.

Add: No 9, weidi road Qixia District Nanjing, 210046, P. R. China.

Email: info@biogot.com

Tel: 0086-025-68037686

Fax: 0086-025-68035151