

## MARK2 polyclonal antibody

Catalog: BS9959M

Host: Rabbit

Reactivity: Human, Mouse, Rat

### Background:

Microtubule affinity-regulating kinase 2 (MARK2), also known as EMK1 (ELKL motif kinase 1) or Par1b, is a 788 amino acid protein that is a member of the protein kinase superfamily, MARK subfamily. Highly expressed in heart, brain, skeletal muscle and pancreas, MARK2 is essential for the asymmetric development of membrane domains around polarized epithelial cells. Activation of MARK2 by phosphorylation on Thr 208 allows the protein to modulate the building of a columnar versus a hepatic epithelial cell. MARK2 contains one KA1 (kinase-associated) domain, one protein kinase domain and one UBA domain. MARK2 is expressed as 14 isoforms produced by alternative splicing events. Some of these isoforms may function in graft rejection.

### Product:

Rabbit IgG, 1mg/ml in PBS with 0.02% sodium azide, 50% glycerol, pH7.2

### Molecular Weight:

~ 77, 88 kDa

### Swiss-Prot:

Q7KZI7

### Purification&Purity:

Protein A affinity purified.

### Applications:

WB: 1:500-1:2000 IHC: 1:50-1:200

FC: 1:50-1:100

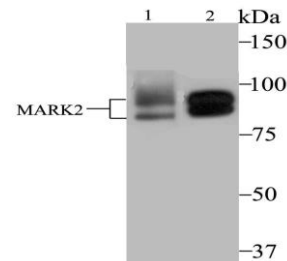
### Storage&Stability:

Store at 4 °C short term. Aliquot and store at -20 °C long term. Avoid freeze-thaw cycles.

### Specificity:

This antibody detects endogenous levels of MARK2 and does not cross-react with related proteins.

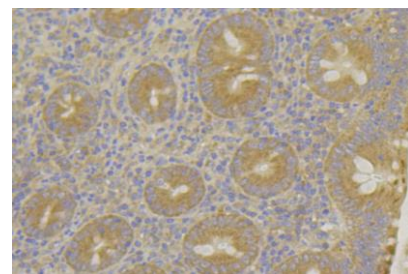
### DATA:



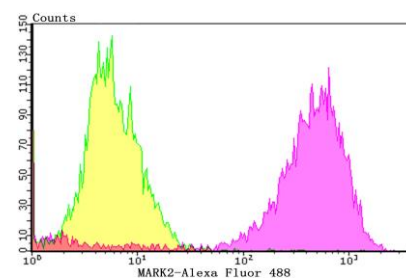
Western blot (WB) analysis of MARK2 polyclonal antibody at 1:2000 dilution

Lane1:MCF-7 whole cell lysate

Lane2:SK-Br-3 whole cell lysate



Immunohistochemical analysis of paraffin-embedded human appendix tissue using anti-MARK2 antibody. Counter stained with hematoxylin.



Flow cytometric analysis of MCF-7 cells with MARK2 antibody at 1/100 dilution (purple) compared with an unlabelled control (cells without incubation with primary antibody; yellow). Alexa Fluor 488-conjugated goat anti-rabbit IgG was used as the secondary antibody.

### Note:

For research use only, not for use in diagnostic procedure.

### Bioworld Technology, Inc.

Add: 1660 South Highway 100, Suite 500 St. Louis Park, MN 55416, USA.

Email: [info@bioworld.com](mailto:info@bioworld.com)

Tel: 6123263284

Fax: 6122933841

### Bioworld technology, co. Ltd.

Add: No 9, weidi road Qixia District Nanjing, 210046, P. R. China.

Email: [info@biogot.com](mailto:info@biogot.com)

Tel: 0086-025-68037686

Fax: 0086-025-68035151