

## Catenin- $\beta$ (Ab-654) polyclonal antibody

Catalog: BSP1732

Host: Rabbit

Reactivity: Human, Rat

### BackGround:

$\beta$ -catenin is a key downstream effector in the Wnt signaling pathway. It is implicated in two major biological processes in vertebrates: early embryonic development and tumorigenesis. CK1 phosphorylates  $\beta$ -catenin at Ser45. This phosphorylation event primes  $\beta$ -catenin for subsequent phosphorylation by GSK-3 $\beta$ . GSK-3 $\beta$  destabilizes  $\beta$ -catenin by phosphorylating it at Ser33, Ser37, and Thr41. Mutations at these sites result in the stabilization of  $\beta$ -catenin protein levels and have been found in many tumor cell lines.

### Product:

Rabbit IgG, 1mg/ml in PBS with 0.02% sodium azide, 50% glycerol, pH7.2.

### Molecular Weight:

~ 85 kDa

### Swiss-Prot:

P35222

### Purification&Purity:

The antibody was affinity-purified from rabbit antiserum by affinity-chromatography using epitope-specific immunogen and the purity is > 95% (by SDS-PAGE).

### Applications:

WB: 1:1000~1:2000

IP 1:50 - 1:200

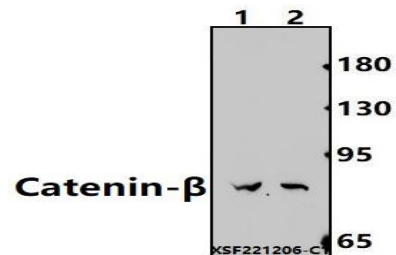
### Storage&Stability:

Store at 4 °C short term. Aliquot and store at -20 °C long term. Avoid freeze-thaw cycles.

### Specificity:

Catenin- $\beta$ (Ab-654) polyclonal antibody detects endogenous levels of Catenin- $\beta$  protein.

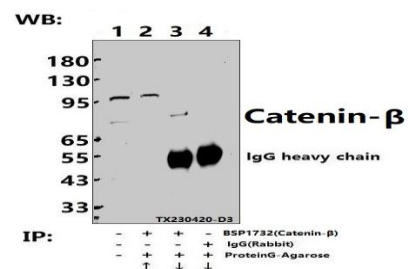
### DATA:



Western blot (WB) analysis of Catenin- $\beta$ (Ab-654) polyclonal antibody at 1:1000 dilution

Lane1:C6 whole cell lysate(30ug)

Lane2:Hela whole cell lysate(30ug)



Immunoprecipitation of Hela cell lysates using Catenin- $\beta$ (Ab-654) pAb (Sepharose Bead Conjugate)#BD0048 (lane 2 and lane 3) and Nonspecific IgG Control (Sepharose Bead Conjugate)#BD0048 (lane 4). Lane 1 is 30% input. The western blot was probed using Catenin- $\beta$ (Ab-654) pAb #BSP1732.

### Note:

For research use only, not for use in diagnostic procedure.

### Bioworld Technology, Inc.

Add: 1660 South Highway 100, Suite 500 St. Louis Park, MN 55416, USA.

Email: [info@bioworld.com](mailto:info@bioworld.com)

Tel: 6123263284

Fax: 6122933841

### Bioworld technology, co. Ltd.

Add: No 9, weidi road Qixia District Nanjing, 210046, P. R. China.

Email: [info@biogot.com](mailto:info@biogot.com)

Tel: 0086-025-68037686

Fax: 0086-025-68035151