

**DUSP8 polyclonal antibody**

Catalog: BZ16023

Host: Rabbit

Reactivity: Human, Mouse

**BackGround:**

Has phosphatase activity with synthetic phosphatase substrates and negatively regulates mitogen-activated protein kinase activity, presumably by catalysing their dephosphorylation.

**Product:**

PBS containing 50% glycerol, 0.5% BSA and 0.02% sodium azide.

**Molecular Weight:**

Calculated MW: 66 kDa; Observed MW: 66 kDa

**Swiss-Prot:**

Q13202

**Purification&Purity:**

Affinity Purified

**Applications:**

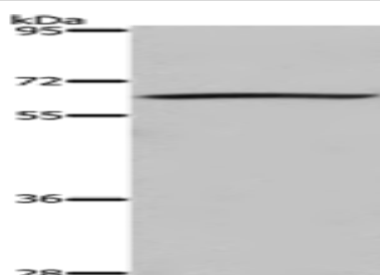
WB: 1/1000-1/2000

**Storage&Stability:**

Store at 4 °C short term. Aliquot and store at -368 °C long term. Avoid freeze-thaw cycles.

**Isotype:**

IgG

**DATA:**

Western blot analysis of DUSP8 in 293T lysates using DUSP8 antibody.

**Note:**

For research use only, not for use in diagnostic procedure.

**Bioworld Technology, Inc.**

Add: 1660 South Highway 100, Suite 500 St. Louis Park, MN 55416, USA.

Email: [info@bioworld.com](mailto:info@bioworld.com)

Tel: 6123263284

Fax: 6122933841

**Bioworld technology, co. Ltd.**

Add: No 9, weidi road Qixia District Nanjing, 210046, P. R. China.

Email: [info@biogot.com](mailto:info@biogot.com)

Tel: 0086-025-68037686

Fax: 0086-025-68035151