

**ACTC1 polyclonal antibody**

Catalog: BZ16035

Host: Rabbit

Reactivity: Human, Mouse, Rat

**BackGround:**

Actins are highly conserved proteins that are involved in various types of cell motility and are ubiquitously expressed in all eukaryotic cells.

**Product:**

Liquid in PBS containing 50% glycerol, 0.5% BSA and 0.02% sodium azide, pH 7.3.

**Molecular Weight:**

Calculated MW: 42 kDa; Observed MW: 42 kDa

**Swiss-Prot:**

P68032

**Purification&Purity:**

Affinity Purified

**Applications:**

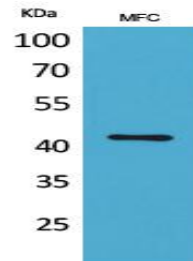
WB: 1/500-1/1000 IHC: 1/50-1/100 ELISA: 1/10000

**Storage&Stability:**

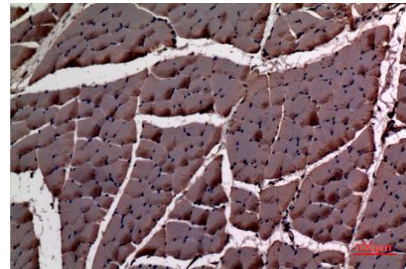
Store at 4 °C short term. Aliquot and store at -20 °C long term. Avoid freeze-thaw cycles.

**Isotype:**

IgG

**DATA:**

Western blot analysis of ACTC1 in MFC lysates using ACTC1 antibody.



Immunohistochemistry analysis of paraffin-embedded rat muscle using ACTC1 antibody. High-pressure and temperature Sodium Citrate pH 6.0 was used for antigen retrieval.

Immunohistochemistry analysis of paraffin-embedded rat muscle using ACTC1 antibody. High-pressure and temperature Sodium Citrate pH 6.0 was used for antigen retrieval.

Immunohistochemistry analysis of paraffin-embedded mouse muscle using ACTC1 antibody. High-pressure and temperature Sodium Citrate pH 6.0 was used for antigen retrieval.

**Note:**

For research use only, not for use in diagnostic procedure.

**Bioworld Technology, Inc.**

Add: 1660 South Highway 100, Suite 500 St. Louis Park, MN 55416, USA.

Email: [info@bioworld.com](mailto:info@bioworld.com)

Tel: 6123263284

Fax: 6122933841

**Bioworld technology, co. Ltd.**

Add: No 9, weidi road Qixia District Nanjing, 210046, P. R. China.

Email: [info@biogot.com](mailto:info@biogot.com)

Tel: 0086-025-68037686

Fax: 0086-025-68035151