

## Phospho-IRS1 (Ser636) polyclonal antibody

Catalog: BZ16044

Host: Rabbit

Reactivity: Human, Mouse, Rat

### BackGround:

May mediate the control of various cellular processes by insulin. When phosphorylated by the insulin receptor binds specifically to various cellular proteins containing SH2 domains such as phosphatidylinositol 3-kinase p85 subunit or GRB2. Activates phosphatidylinositol 3-kinase when bound to the regulatory p85 subunit .

### Product:

Liquid in PBS containing 50% glycerol, 0.5% BSA and 0.02% sodium azide, pH 7.3.

### Molecular Weight:

Calculated MW: 132 kDa; Observed MW: 150 kDa

### Swiss-Prot:

P35568

### Purification&Purity:

Affinity Purified

### Applications:

WB: 1/500-1/1000 IHC: 1/50-1/100 IF: 1/50-1/200  
ELISA: 1/10000

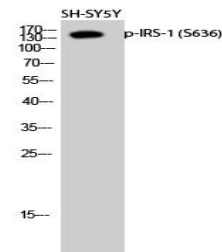
### Storage&Stability:

Store at 4 °C short term. Aliquot and store at -20 °C long term. Avoid freeze-thaw cycles.

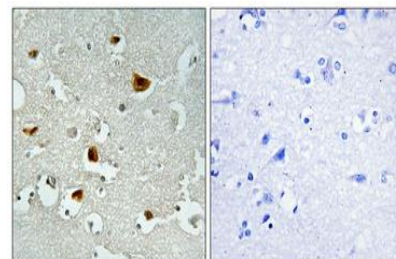
### Isotype:

IgG

### DATA:



Western blot analysis of Phospho-IRS1 in SH-SY5Y lysates using Phospho-IRS1 antibody.



Immunohistochemistry analysis of paraffin-embedded Human brain using Phospho-IRS1 antibody. High-pressure and temperature Tris-EDTA pH 8.0 was used for antigen retrieval. Sample with blocking peptide on the right.

### Note:

For research use only, not for use in diagnostic procedure.

### Bioworld Technology, Inc.

Add: 1660 South Highway 100, Suite 500 St. Louis Park, MN 55416, USA.

Email: [info@bioworld.com](mailto:info@bioworld.com)

Tel: 6123263284

Fax: 6122933841

### Bioworld technology, co. Ltd.

Add: No 9, weidi road Qixia District Nanjing, 210046, P. R. China.

Email: [info@biogot.com](mailto:info@biogot.com)

Tel: 0086-025-68037686

Fax: 0086-025-68035151