

PP2A alpha polyclonal antibody

Catalog: BZ16074

Host: Rabbit

Reactivity: Human, Mouse, Rat

BackGround:

PP2A is the major phosphatase for microtubule-associated proteins (MAPs). PP2A can modulate the activity of phosphorylase B kinase casein kinase 2, mitogen-stimulated S6 kinase, and MAP-2 kinase. Cooperates with SGOL2 to protect centromeric cohesin from separase-mediated cleavage in oocytes specifically during meiosis I (By similarity). Can dephosphorylate SV40 large T antigen and p53/TP53. Activates RAF1 by dephosphorylating it at 'Ser-259'.

Product:

Liquid in PBS containing 50% glycerol, 0.5% BSA and 0.02% sodium azide, pH 7.3.

Molecular Weight:

Calculated MW: 36 kDa; Observed MW: 36 kDa

Swiss-Prot:

P67775

Purification&Purity:

Affinity Purified

Applications:

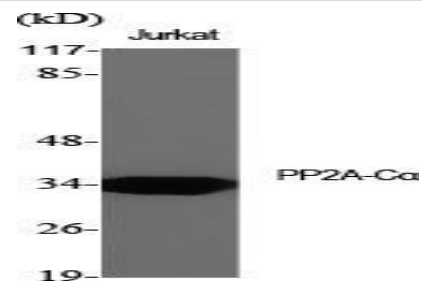
WB: 1/500-1/1000 IHC: 1/50-1/100 IF: 1/50-1/200
ELISA: 1/10000

Storage&Stability:

Store at 4 °C short term. Aliquot and store at -20 °C long term. Avoid freeze-thaw cycles.

Isotype:

IgG

DATA:

Western blot analysis of PP2A alpha in various lysates using PP2A alpha antibody.

Western blot analysis of PP2A alpha in A549 lysates using PP2A α antibody.

Western blot analysis of PP2A alpha in various lysates using PP2A alpha antibody.

Note:

For research use only, not for use in diagnostic procedure.

Bioworld Technology, Inc.

Add: 1660 South Highway 100, Suite 500 St. Louis Park,
MN 55416, USA.

Email: info@bioworld.com

Tel: 6123263284

Fax: 6122933841

Bioworld technology, co. Ltd.

Add: No 9, weidi road Qixia District Nanjing, 210046,
P. R. China.

Email: info@biogot.com

Tel: 0086-025-68037686

Fax: 0086-025-68035151