

LXN polyclonal antibody

Catalog: BZ16080

Host: Rabbit

Reactivity: Human, Mouse, Rat

BackGround:

Hardly reversible, non-competitive, and potent inhibitor of CPA1, CPA2 and CPA4.

Product:

Liquid in PBS containing 50% glycerol, 0.5% BSA and 0.02% sodium azide, pH 7.3.

Molecular Weight:

Calculated MW: 26 kDa; Observed MW: 26 kDa

Swiss-Prot:

Q9BS40

Purification&Purity:

Affinity Purified

Applications:

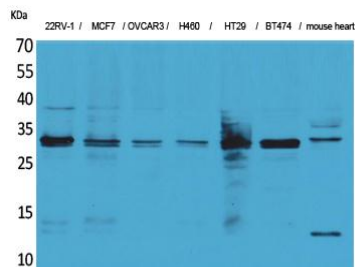
WB: 1/500-1/1000 IHC: 1/50-1/100 ELISA: 1/10000

Storage&Stability:

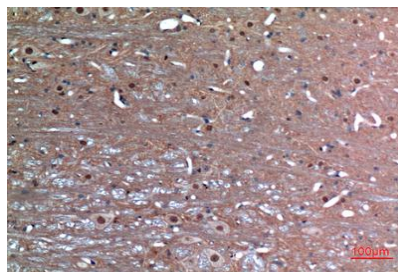
Store at 4 °C short term. Aliquot and store at -20 °C long term. Avoid freeze-thaw cycles.

Isotype:

IgG

DATA:

Western blot analysis of LXN in 22RV MCF-7, OVCAR3, H460, HT-29, BT474, mouse heart lysates using LXN antibody.



Immunohistochemistry analysis of paraffin-embedded rat brain using LXN antibody. High-pressure and temperature Sodium Citrate pH 6.0 was used for antigen retrieval.

Immunohistochemistry analysis of paraffin-embedded rat brain using LXN antibody. High-pressure and temperature Sodium Citrate pH 6.0 was used for antigen retrieval.

Note:

For research use only, not for use in diagnostic procedure.

Bioworld Technology, Inc.

Add: 1660 South Highway 100, Suite 500 St. Louis Park, MN 55416, USA.

Email: info@bioworld.com

Tel: 6123263284

Fax: 6122933841

Bioworld technology, co. Ltd.

Add: No 9, weidi road Qixia District Nanjing, 210046, P. R. China.

Email: info@biogot.com

Tel: 0086-025-68037686

Fax: 0086-025-68035151