

GDF6 polyclonal antibody

Catalog: BZ16098

Host: Rabbit

Reactivity: Human, Mouse, Rat

BackGround:

Growth factor that controls proliferation and cellular differentiation in the retina and bone formation.

Product:

Liquid in PBS containing 50% glycerol, 0.5% BSA and 0.02% sodium azide, pH 7.3.

Molecular Weight:

Calculated MW: 51 kDa; Observed MW: 51 kDa

Swiss-Prot:

Q6KF10

Purification&Purity:

Affinity Purified

Applications:

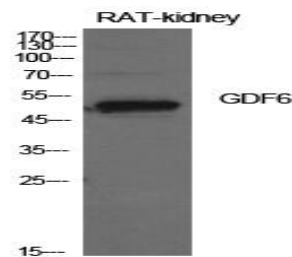
WB: 1/500-1/1000 ELISA: 1/10000

Storage&Stability:

Store at 4 °C short term. Aliquot and store at -20 °C long term. Avoid freeze-thaw cycles.

Isotype:

IgG

DATA:

Western blot analysis of GDF6 in rat kidney lysates using GDF6 antibody.

Western blot analysis of GDF6 in rat kidney lysates using GDF6 antibody.

Western blot analysis of GDF6 in 293T lysates using GDF6 antibody.

Note:

For research use only, not for use in diagnostic procedure.

Bioworld Technology, Inc.

Add: 1660 South Highway 100, Suite 500 St. Louis Park, MN 55416, USA.

Email: info@bioworld.com

Tel: 6123263284

Fax: 6122933841

Bioworld technology, co. Ltd.

Add: No 9, weidi road Qixia District Nanjing, 210046, P. R. China.

Email: info@biogot.com

Tel: 0086-025-68037686

Fax: 0086-025-68035151