

Dectin-2 polyclonal antibody

Catalog: BZ16100

Host: Rabbit

Reactivity: Human

BackGround:

Like dectin-1 (CLEC7A; MIM 606264), CLEC6A, or dectin-2, is a type II membrane receptor with an extracellular C-type lectin-like domain fold. However, unlike dectin-1, dectin-2 lacks an immunoreceptor tyrosine-based activation motif (ITAM) in its cytoplasmic domain

Product:

Liquid in PBS containing 50% glycerol, 0.5% BSA and 0.02% sodium azide, pH 7.3.

Molecular Weight:

Calculated MW: 24 kDa; Observed MW: 24 kDa

Swiss-Prot:

Q6EIG7

Purification&Purity:

Affinity Purified

Applications:

WB: 1/500-1/1000 IHC: 1/50-1/100 ELISA: 1/10000

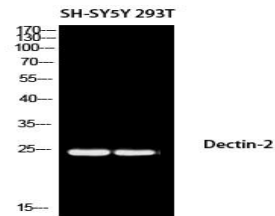
Storage&Stability:

Store at 4 °C short term. Aliquot and store at -20 °C long term. Avoid freeze-thaw cycles.

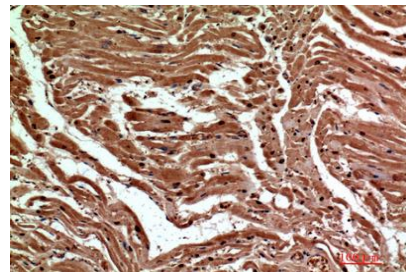
Isotype:

IgG

DATA:



Western blot analysis of Dectin-2 in SH-SY5Y, 293T lysates using Dectin-2 antibody.



Western blot analysis of Dectin-2 in K562 lysates using Dectin-2 antibody.

Immunohistochemistry analysis of paraffin-embedded Human heart using Dectin-2 antibody. High-pressure and temperature Sodium Citrate pH 6.0 was used for antigen retrieval.

Note:

For research use only, not for use in diagnostic procedure.

Bioworld Technology, Inc.

Add: 1660 South Highway 100, Suite 500 St. Louis Park, MN 55416, USA.

Email: info@bioworld.com

Tel: 6123263284

Fax: 6122933841

Bioworld technology, co. Ltd.

Add: No 9, weidi road Qixia District Nanjing, 210046, P. R. China.

Email: info@biogot.com

Tel: 0086-025-68037686

Fax: 0086-025-68035151