

SIRP alpha/beta polyclonal antibody

Catalog: BZ16143

Host: Rabbit

Reactivity: Human

BackGround:

Immunoglobulin-like cell surface receptor for CD47. Acts as docking protein and induces translocation of PTPN6, PTPN11 and other binding partners from the cytosol to the plasma membrane. Supports adhesion of cerebellar neurons, neurite outgrowth and glial cell attachment.

Product:

Liquid in PBS containing 50% glycerol, 0.5% BSA and 0.02% sodium azide, pH 7.3.

Molecular Weight:

Calculated MW: 55 kDa; Observed MW: 55 kDa

Swiss-Prot:

P78324/Q5TFQ8

Purification&Purity:

Affinity Purified

Applications:

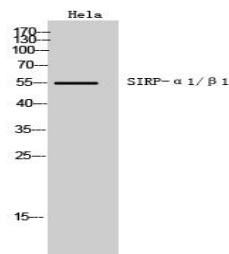
WB: 1/500-1/1000 IHC: 1/50-1/100 ELISA: 1/10000

Storage&Stability:

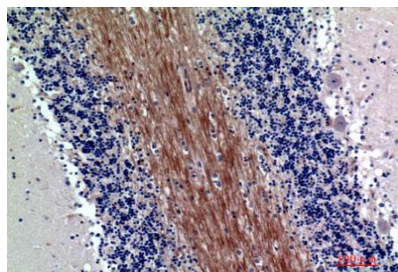
Store at 4 °C short term. Aliquot and store at -20 °C long term. Avoid freeze-thaw cycles.

Isotype:

IgG

DATA:

Western blot analysis of SIRP alpha/beta in HeLa lysates using SIRP alpha/beta antibody.



Immunohistochemistry analysis of paraffin-embedded Human brain using SIRP alpha/beta antibody. High-pressure and temperature Sodium Citrate pH 6.0 was used for antigen retrieval.

Note:

For research use only, not for use in diagnostic procedure.

Bioworld Technology, Inc.

Add: 1660 South Highway 100, Suite 500 St. Louis Park, MN 55416, USA.

Email: info@bioworld.com

Tel: 6123263284

Fax: 6122933841

Bioworld technology, co. Ltd.

Add: No 9, weidi road Qixia District Nanjing, 210046, P. R. China.

Email: info@biogot.com

Tel: 0086-025-68037686

Fax: 0086-025-68035151