

**CD300d polyclonal antibody**

Catalog: BZ16146

Host: Rabbit

Reactivity: Human

**BackGround:**

Predicted to enable transmembrane signaling receptor activity and virus receptor activity. Predicted to be involved in immune system process. Predicted to act upstream of or within regulation of interleukin-6 production and regulation of tumor necrosis factor production. Predicted to be integral component of membrane. Predicted to be active in plasma membrane.

**Product:**

Liquid in PBS containing 50% glycerol, 0.5% BSA and 0.02% sodium azide, pH 7.3.

**Molecular Weight:**

Calculated MW: 22 kDa; Observed MW: 22 kDa

**Swiss-Prot:**

Q6UXZ3

**Purification&Purity:**

Affinity Purified

**Applications:**

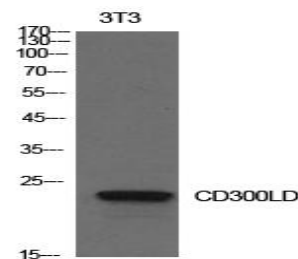
WB: 1/500-1/1000 ELISA: 1/10000

**Storage&Stability:**

Store at 4 °C short term. Aliquot and store at -20 °C long term. Avoid freeze-thaw cycles.

**Isotype:**

IgG

**DATA:**

Western blot analysis of CD300d in NIH3T3 lysates using CD300d antibody.

Western blot analysis of CD300d in 3T3 lysates using CD300d antibody.

**Note:**

For research use only, not for use in diagnostic procedure.

**Bioworld Technology, Inc.**

Add: 1660 South Highway 100, Suite 500 St. Louis Park, MN 55416, USA.

Email: [info@bioworld.com](mailto:info@bioworld.com)

Tel: 6123263284

Fax: 6122933841

**Bioworld technology, co. Ltd.**

Add: No 9, weidi road Qixia District Nanjing, 210046, P. R. China.

Email: [info@biogot.com](mailto:info@biogot.com)

Tel: 0086-025-68037686

Fax: 0086-025-68035151