

**Transmembrane Protein 72 polyclonal antibody**

Catalog: BZ16266

Host: Rabbit

Reactivity: Human, Mouse, Rat

**BackGround:**

This gene encodes a transmembrane protein which may be expressed specifically in the kidney.

**Product:**

Liquid in PBS containing 50% glycerol, 0.5% BSA and 0.02% sodium azide, pH 7.3.

**Molecular Weight:**

Calculated MW: 30 kDa; Observed MW: 30 kDa

**Swiss-Prot:**

A0PK05

**Purification&Purity:**

Affinity Purified

**Applications:**

WB: 1/500-1/1000 ELISA: 1/10000

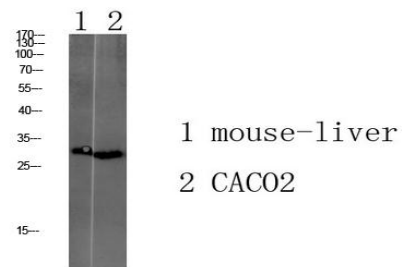
**Storage&Stability:**

Store at 4 °C short term. Aliquot and store at -20 °C long

term. Avoid freeze-thaw cycles.

**Isotype:**

IgG

**DATA:**

Western blot analysis of Transmembrane Protein 72 in various lysates using Transmembrane Protein 72 antibody.

**Note:**

For research use only, not for use in diagnostic procedure.

**Bioworld Technology, Inc.**

Add: 1660 South Highway 100, Suite 500 St. Louis Park, MN 55416, USA.

Email: [info@bioworld.com](mailto:info@bioworld.com)

Tel: 6123263284

Fax: 6122933841

**Bioworld technology, co. Ltd.**

Add: No 9, weidi road Qixia District Nanjing, 210046, P. R. China.

Email: [info@biogot.com](mailto:info@biogot.com)

Tel: 0086-025-68037686

Fax: 0086-025-68035151