

## Human kappa Light Chain polyclonal antibody

Catalog: BZ16276

Host: Rabbit

Reactivity: Human

### BackGround:

Constant region of immunoglobulin light chains. Immunoglobulins, also known as antibodies, are membrane-bound or secreted glycoproteins produced by B lymphocytes. In the recognition phase of humoral immunity, the membrane-bound immunoglobulins serve as receptors which, upon binding of a specific antigen, trigger the clonal expansion and differentiation of B lymphocytes into immunoglobulins-secreting plasma cells.

### Product:

Liquid in PBS containing 50% glycerol, 0.5% BSA and 0.02% sodium azide, pH 7.3.

### Molecular Weight:

Calculated MW: 12 kDa; Observed MW: 25 kDa

### Swiss-Prot:

P01834

### Purification&Purity:

Affinity Purified

### Applications:

WB: 1/500-1/1000 ELISA: 1/10000

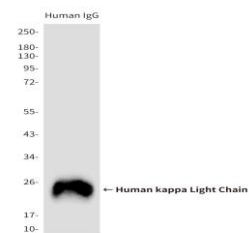
### Storage&Stability:

Store at 4 °C short term. Aliquot and store at -20 °C long term. Avoid freeze-thaw cycles.

### Isotype:

IgG

### DATA:



Indirect ELISA assay for Rabbit Human kappa light chain antibody. Antigen coating concentration: 2ug/ml.

Western blot analysis of Human kappa Light Chain in total Human IgG reduced and denatured in 2X SDS loading buffer with DTT using Human kappa Light Chain antibody

### Note:

For research use only, not for use in diagnostic procedure.

### Bioworld Technology, Inc.

Add: 1660 South Highway 100, Suite 500 St. Louis Park, MN 55416, USA.

Email: [info@bioworld.com](mailto:info@bioworld.com)

Tel: 6123263284

Fax: 6122933841

### Bioworld technology, co. Ltd.

Add: No 9, weidi road Qixia District Nanjing, 210046, P. R. China.

Email: [info@biogot.com](mailto:info@biogot.com)

Tel: 0086-025-68037686

Fax: 0086-025-68035151