

**14-3-3 polyclonal antibody**

Catalog: BZ16282

Host: Rabbit

Reactivity: Human, Mouse, Rat

**BackGround:**

Adapter protein implicated in the regulation of a large spectrum of both general and specialized signaling pathways. Binds to a large number of partners, usually by recognition of a phosphoserine or phosphothreonine motif. Binding generally results in the modulation of the activity of the binding partner. Negative regulator of osteogenesis.

**Product:**

Liquid in PBS containing 50% glycerol, 0.5% BSA and 0.02% sodium azide, pH 7.3.

**Molecular Weight:**

Calculated MW: 27-29 kDa; Observed MW: 27-29 kDa

**Swiss-Prot:**

P31946/P62258/Q04917/P61981/P31947/P27348/P63104

**Purification&Purity:**

Affinity Purified

**Applications:**

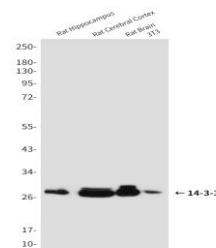
WB: 1/500-1/1000

**Storage&Stability:**

Store at 4 °C short term. Aliquot and store at -20 °C long term. Avoid freeze-thaw cycles.

**Isotype:**

IgG

**DATA:**

Western blot analysis of 14-3-3 in rat Hippocampus, rat Cerebral Cortex and rat Brain lysates using 14-3-3 antibody.

Western blot analysis of 14-3-3 in C6, 3T3 and Hela lysates using 14-3-3 antibody.

**Note:**

For research use only, not for use in diagnostic procedure.

**Bioworld Technology, Inc.**

Add: 1660 South Highway 100, Suite 500 St. Louis Park, MN 55416, USA.

Email: [info@bioworld.com](mailto:info@bioworld.com)

Tel: 6123263284

Fax: 6122933841

**Bioworld technology, co. Ltd.**

Add: No 9, weidi road Qixia District Nanjing, 210046, P. R. China.

Email: [info@biogot.com](mailto:info@biogot.com)

Tel: 0086-025-68037686

Fax: 0086-025-68035151