

4E BP1 polyclonal antibody

Catalog: BZ16283

Host: Rabbit

Reactivity: Human, Mouse, Rat

BackGround:

Translation repressor protein 4E-BP1 (also known as PHAS-1) inhibits cap-dependent translation by binding to the translation initiation factor eIF4E. Hyperphosphorylation of 4E-BP1 disrupts this interaction and results in activation of cap-dependent translation. Both the PI3 kinase/Akt pathway and FRAP/mTOR kinase regulate 4E-BP1 activity.

Product:

Liquid in PBS containing 50% glycerol, 0.5% BSA and 0.02% sodium azide, pH 7.3.

Molecular Weight:

Calculated MW: 13 kDa; Observed MW: 15-20 kDa

Swiss-Prot:

Q13541

Purification&Purity:

Affinity Purified

Applications:

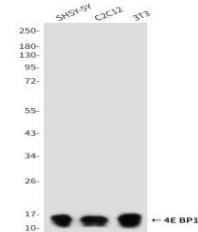
WB: 1/500-1/1000 IP: 1/20

Storage&Stability:

Store at 4 °C short term. Aliquot and store at -20 °C long term. Avoid freeze-thaw cycles.

Isotype:

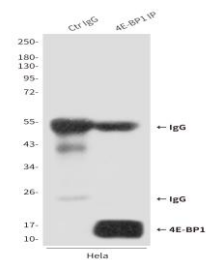
IgG

DATA:

Western blot analysis of 4EBP1 in SH-SY5Y, C2C12 and 3T3 lysates using 4EBP1 antibody.

Immunoprecipitation analysis of 4E BP1 in Hela lysates using 4EBP1 antibody.

Western blot analysis of 4E BP1 in Jurkat, Hela and C6 lysates using 4EBP1 antibody.



Western blot analysis of 4E BP1 in C2C12, A549 and 3T3 lysates using 4E BP1 antibody

Note:

For research use only, not for use in diagnostic procedure.

Bioworld Technology, Inc.

Add: 1660 South Highway 100, Suite 500 St. Louis Park, MN 55416, USA.

Email: info@bioworld.com

Tel: 6123263284

Fax: 6122933841

Bioworld technology, co. Ltd.

Add: No 9, weidi road Qixia District Nanjing, 210046, P. R. China.

Email: info@biogot.com

Tel: 0086-025-68037686

Fax: 0086-025-68035151