

Phospho-PTEN (Ser380) polyclonal antibody

Catalog: BZ16288

Host: Rabbit

Reactivity: Human, Mouse, Rat

BackGround:

Tumor suppressor. Acts as a dual-specificity protein phosphatase, dephosphorylating tyrosine-, serine- and threonine-phosphorylated proteins. Also acts as a lipid phosphatase, removing the phosphate in the D3 position of the inositol ring from phosphatidylinositol 3,4,5-trisphosphate, phosphatidylinositol 3,4-diphosphate, phosphatidylinositol 3-phosphate and inositol 1,3,4,5-tetrakisphosphate with order of substrate preference in vitro $\text{PtdIns}(3,4,5)\text{P}_3 > \text{PtdIns}(3,4)\text{P}_2 > \text{PtdIns}3\text{P} > \text{Ins}(1,3,4,5)\text{P}_4$.

Product:

Liquid in PBS containing 50% glycerol, 0.5% BSA and 0.02% sodium azide, pH 7.3.

Molecular Weight:

-

Swiss-Prot:

P60484

Purification&Purity:

Affinity Purified

Applications:

IHC: 1/50-1/100 ICC: 1/100-1/200

Storage&Stability:

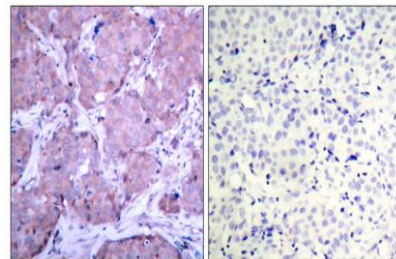
Store at 4 °C short term. Aliquot and store at -20 °C long term. Avoid freeze-thaw cycles.

Isotype:

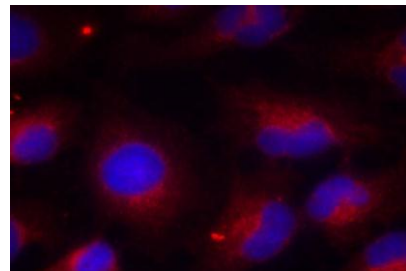
IgG

DATA:

Immunohistochemistry analysis of paraffin-embedded Human breast carcinoma tissue using Phospho-PTEN antibody. High-pressure and temperature Sodium Citrate pH 6.0 was used for antigen retrieval. Sample with blocking peptide on the right.



Immunofluorescence analysis of Phospho-PTEN in HeLa cells using PTEN antibody, and DAPI.

**Note:**

For research use only, not for use in diagnostic procedure.

Bioworld Technology, Inc.

Add: 1660 South Highway 100, Suite 500 St. Louis Park, MN 55416, USA.

Email: info@bioworld.com

Tel: 6123263284

Fax: 6122933841

Bioworld technology, co. Ltd.

Add: No 9, weidi road Qixia District Nanjing, 210046, P. R. China.

Email: info@biogot.com

Tel: 0086-025-68037686

Fax: 0086-025-68035151